



Stamp Mate 2018

User's Guide

© 2012-2018 Catamates.com

Table of Contents

Welcome to Stamp Mate 2018	3
Download and Install	3
Running Stamp Mate for the First Time	4
Register/Validating Program	4
Navigate Through Program	5
Home	7
Collection	7
Adding Stamps	10
Adding Stamps Automatically	10
Adding Stamps Manually	13
Clone Existing Stamp	17
Editing Stamps	18
Edit Stamp	18
Edit Multi Stamp	20
Edit Keyword	23
Edit Status	25
Import Stamps from Colnect Account	27
Update Stamps Automatically	28
Quantities	30
Purchases and Sales	32
Cumulative Overview - Sums	34
Filter, Search And Sort	35
Delete Stamps	37
Auctions - Online Search	38
Lookup Data	39
Default Values	43
Print Preview	44
Customization	47
Import from text file (CSV)	48
Import from Stamp Mate Database	50
Export Data	51
Statistics	54
Synchronize data with Cloud	56
Settings	59
Manage Database	63
Check Update	64

Welcome to Stamp Mate 2018

Stamp Mate 2018 is the 3rd version of our Stamp collector's software. It has many powerful functions and it is extremely easy to use.

The main goal of the software was to become the best program for Stamp collecting that would help the collectors worldwide to manage their collections. We have mainly achieved this through its friendly interface, functionality (automatic import) and ease-of use. Managing big amount of data has never been easier, clearer and more pleasant.

Stamp Mate 2018 is ideal for amateur as well as for professional use.

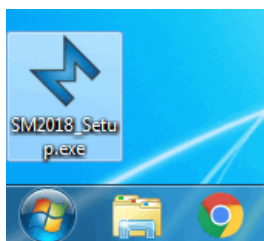
Stamp Mate 2018 supports Unicode (UTF8) in order to be practical for users worldwide.

Download and Install

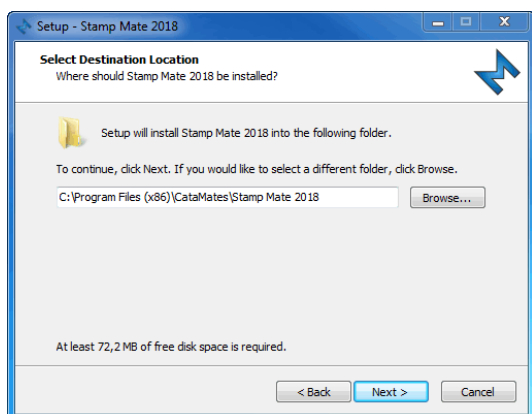
Stamp Mate 2018 is officially supported on Microsoft Windows 10, 8, 7, Vista, XP and 2000.

Step 1: We recommend that you download the latest version of Stamp Mate from our website www.catamates.com which will ensure that you get a stable product.

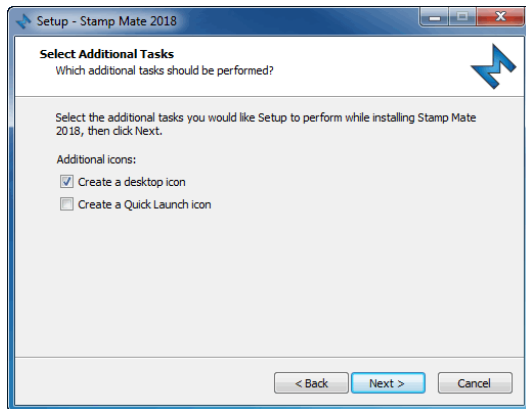
Step 2: Locate the file on your computer, double click on the installation file and follow the steps in the installation process.



Step 3: Here you can select the installation location for your Stamp Mate software. We recommend installing to the default location.



Step 4: Check the box if you'd like to create a desktop shortcut for quicker access to Stamp Mate 2018.

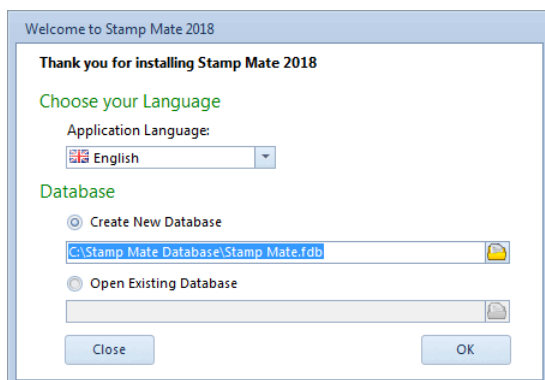


That's it! Now you can check the [Running Stamp Mate for the First Time](#) chapter.

Running Stamp Mate for the First Time

Start Stamp Mate by choosing the Stamp Mate 2018 shortcut from the Windows Start Menu.

The Welcome window is the first program window to appear and this is where you create your first database.



First you can change the language of a program. At the moment you can choose between 12 languages.

If you choose to create a new database, the application will ask you to add Sample Data to your database. The purpose of Sample Data is to get familiar with the program, to try out all the features and to get a feel of how things work.

To open an existing database, check 'Open Existing Database' and either select or enter the existing database that you want to open.

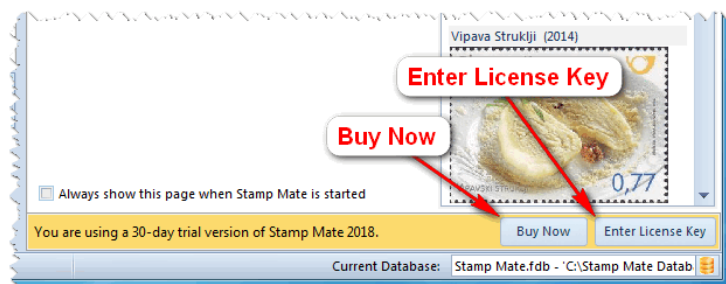
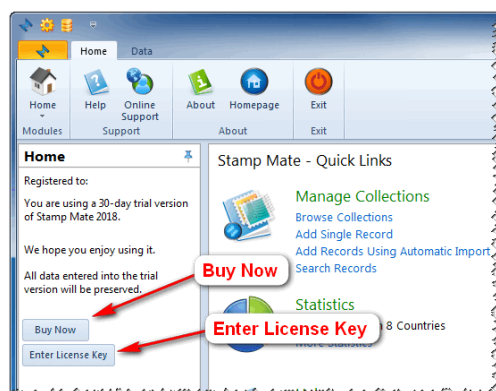
Register/Validating Program

Validating Stamp Mate

Stamp Mate is available as a fully functional trial version, but with entry limitations. After you've installed the software and have purchased a license, you will receive your license information from Catamates.com by email.

Buying License

When using the trial version, you can easily purchase a license from Catamates.com. Just click the 'Buy Now' button in the Home window or click 'Buy Now' in the right bottom corner of the program (yellow ribbon). You will automatically be redirected to our online shop.



Validating your copy of Stamp Mate

After you have purchased a license you will receive an email with license information.

Click the 'Enter License' key next to 'Buy' icon in Home window or in the right bottom corner of the program (yellow ribbon). Enter your Registration Name (Owner Name) and Registration Key and click OK to activate your software.

NOTE: You don't need to uninstall the trial version before entering your license information. Your trial database will be preserved and you can continue to work, exactly where you left off.

When entering your license information, make sure you enter your Registration Key correctly. Use copy + paste to avoid typing mistakes.

Loss of License Information

In case you lose your license just use our [License Key / Download Link Request Form](#) and we will immediately send you an email containing all your CataMates license keys.

Navigate Through Program

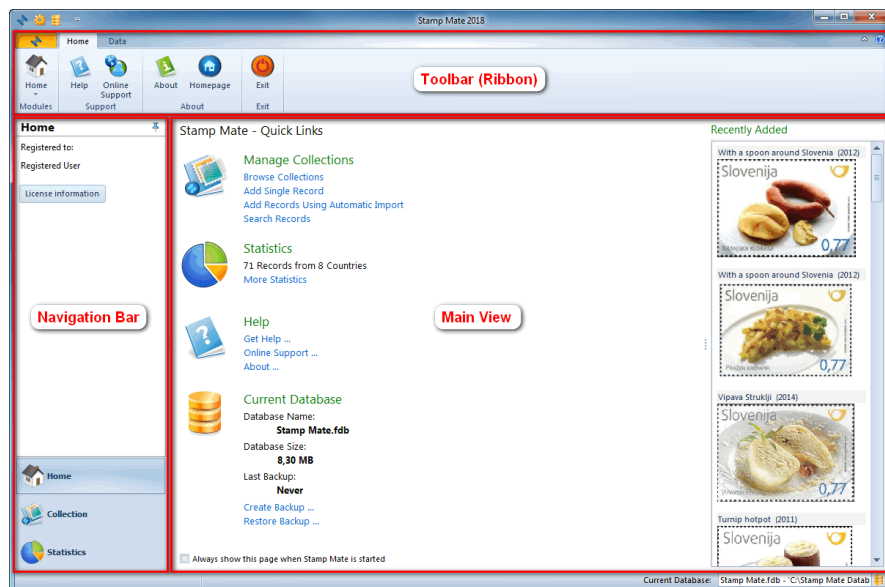
When launching Stamp Mate for the first time it opens a database with trial data if you chose that option by creating new database.

By default, Stamp Mate will start with the layout described under '[Home topic](#)'.

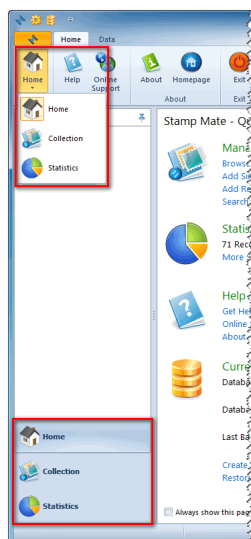
The Main View is the central window that changes by switching different modules.

The Navigation Bar is the left column that allows you to navigate through the program quickly. You can hide it by clicking the pin icon in the top right corner.

The Toolbar (ribbon) contains icons used to control the program.



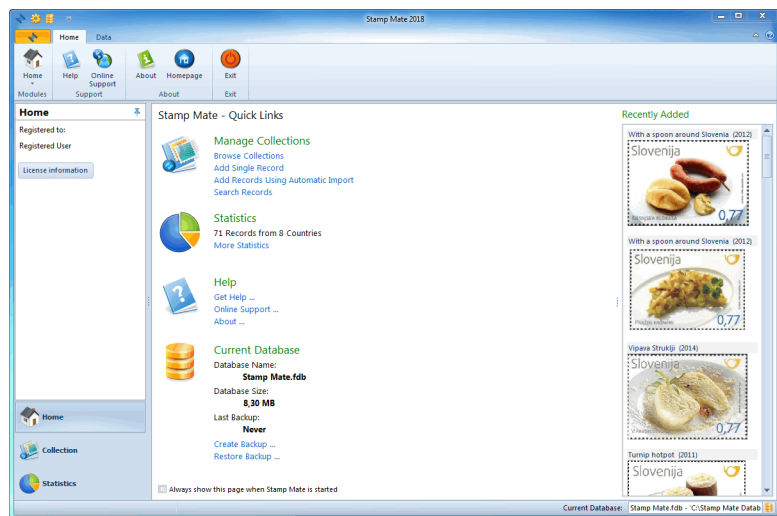
To switch between three main windows (Home, Collection or Statistics) you can either open the dropdown menu in the Toolbar (upper left corner) or choose among them in the navigation panel (bottom left corner).



The Edit tab in the Toolbar contains program information and some shortcuts for managing the database and program [settings](#).

Home

The Home window is the default window that appears when you start Stamp Mate.



In the Main view you can find quick links to the most common topics like Manage Collection, Statistics, Help and Current Database. 'Recently added' data is on the right side. By double clicking the image, a larger image appears.

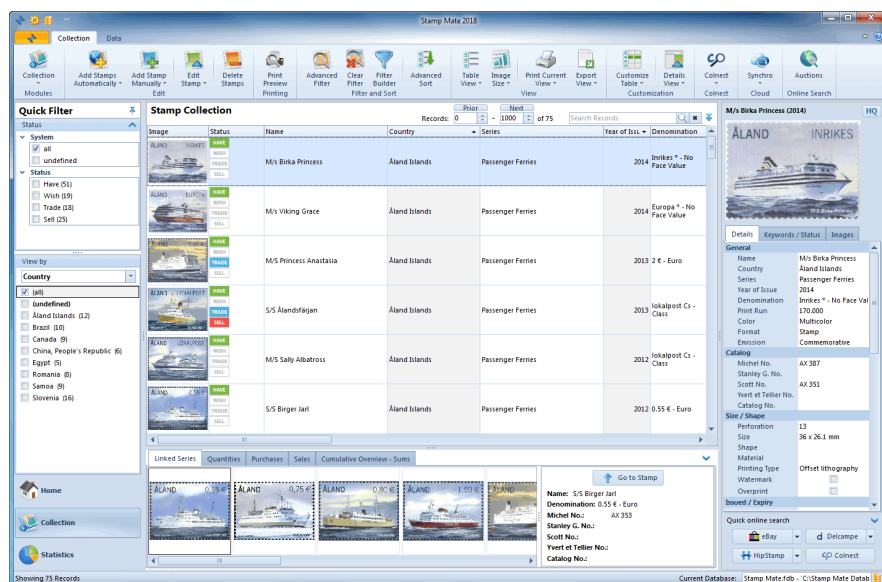
In the Navigation bar you can see license details or the registration status. Below, you can browse through other two main categories: Collection and Statistics.

The Toolbar contains a link to the support service and an About link that helps you operate the program.

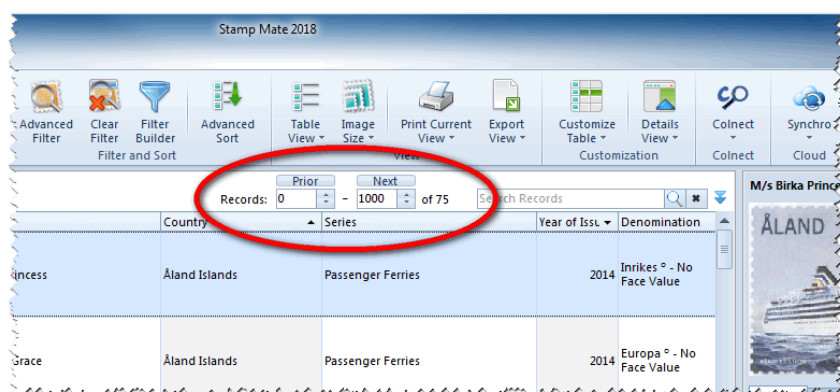
Collection

The Collection window is the one, where you are probably going to spend most of your time, editing stamp lists. It contains your collection list, you can choose different views and filters and exposes image and details for selected stamps.

The Main view shows your collection list. You can customize the preview by using View and Customization options in the Toolbar. Choose among four different views: detail, detail and picture, card detail and card picture. What you see in the list depends on what kind of filters you are using. More about it is described in the topic: [Filter, Search And Sort](#)



IMPORTANT NOTE: On the top of the main view you can find the paging tool. Due to potentially large amounts of data in your collection list, the displayed records are limited to 1000 records per page. You can move through the pages by using the 'Prior' and 'Next' buttons. You can also change the number of displayed records by manually changing the value.




In the upper right corner, there is a quick search bar for finding the stamp you want by entering keywords. The blue arrow opens the advanced filter. More is described in the topic: [Filter, Search And Sort](#)

The Detail window on the right side shows the data for the selected stamp and its image. You can click it for a more detail view.

Below the image you have three tabs:

1. Details - you can change details of the selected stamp by double clicking a specific field.
2. Keywords/status. Here you can find the list of assigned keywords. For changes use the 'Edit Keywords' button. More is described in the topic: [Edit Keywords](#)
3. Images - if the stamp has more than one image you can see them here.

M/s Birka Princess (2014) HQ



Details Keywords / Status Images

General

Name	M/s Birka Princess
Country	Åland Islands
Series	Passenger Ferries
Year of Issue	2014
Denomination	Inrikes ¢ - No Face Val
Print Run	170.000
Color	Multicolor
Format	Stamp
Emission	Commemorative

Catalog

Michel No.	AX 387
Stanley G. No.	
Scott No.	AX 351
Yvert et Tellier No.	
Catalog No.	

Size / Shape

Perforation	13
Size	36 x 26.1 mm
Shape	
Material	
Printing Type	Offset lithography
Watermark	<input type="checkbox"/>
Overprint	<input type="checkbox"/>

Issued / Expiry

Year of Issue	2014
Date of Issue	7.2.2014
Issued By	
Printed By	

Quick online search

On the bottom of the window you can find five tabs:

1. Linked Series - It's showing the stamps which are the same country and series. On the right side you can see the properties of a stamp which is selected in the left grid.
2. Quantities - Here you can store all your inventory information. More is described in the topic: [Quantities](#).
3. Purchases - Store all your purchases. This can be also used for trading just leave the values empty. More is described in the topic: [Purchases and Sales](#).
4. Sales - Store all your sales. This can be also used for trading just leave the values empty. More is described in the topic: [Purchases and Sales](#).
5. Cumulative Overview - Allows you to view the sums of quantities and values of all the records. More is described in the topic: [Cumulative Overview - Sums](#).

Linked Series Quantities Purchases Sales Cumulative Overview - Sums



Name: S/S Birger Jarl
Denomination: 0.55 € - Euro
Michel No.: AX 353
Stanley G. No.:
Scott No.:
Yvert et Tellier No.:
Catalog No.:

In the Navigation bar is 'Quick filter' column where you can use different filters and limit your searching. More about it is described in the topic: [Filter, Search And Sort](#)

Toolbar contains many different options. The most important are:

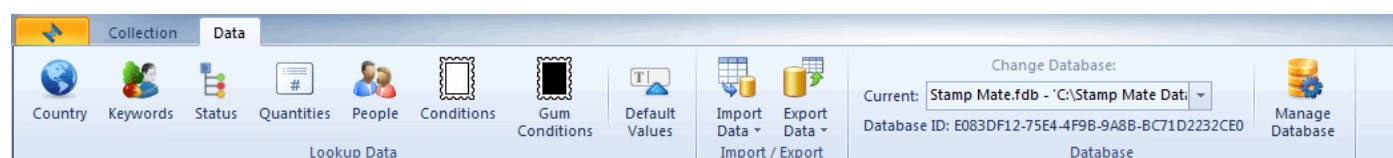
- [Add Stamps Automatically](#)
- [Add Stamp Manually](#)
- [Edit Stamp](#)
- [Delete Stamps](#)

- [Print Preview](#)
- [Advanced Filter](#)
- [Advanced Sort](#)
- [Export View](#)
- [Customization](#)
- Go to Colnect - go to Colnect's webpage
- [Synchronize data with Cloud](#)
- [Auctions](#) - Online Search

NOTE: Go to Colnect button

Go to Colnects site by clicking on any stamp that has been downloaded from their page. There you can see others collectors inventory.

If you have added the stamp manually this option will not be available.



- [Lookup Data](#) (Country, Keywords, Status, Quantities, People, Conditions and Gum Conditions)
- [Default Values](#)
- [Import Data](#)
- [Export Data](#)
- Change Database - it shows you current database. If you are using more databases you can switch among them in dropdown menu.
- [Manage Database](#)

Adding Stamps

Stamp Mate allows you to create your stamp collection by using different adding features.

They are divided in three topics:

- [Adding Stamps Automatically](#)
- [Adding Stamps Manually](#)
- [Clone Existing Stamp](#)

Adding Stamps Automatically

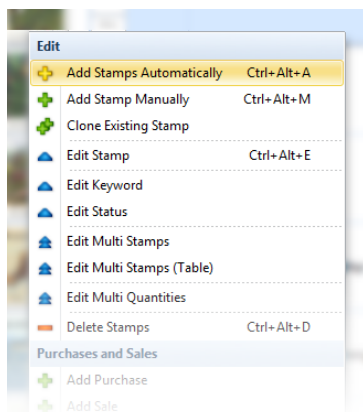
The Adding Stamps Automatically option is the fastest way to add stamps to your database. It enables you to connect to [Colnect's Free Stamp Catalog](#) database and download detailed information to your own collection.

To get there:

- click the 'Add Stamps Automatically' button in the Toolbar or use the 'Ctrl+Alt+A' shortcut or



- right-click the collection list (even if it is empty) and select 'Add Stamps Automatically'



You can search by:

- Country
- Keywords
- Year of Issue

- Searching by Country

If you click the dropdown button you get a list of countries with the number of stamps per country.

- Search by Keywords

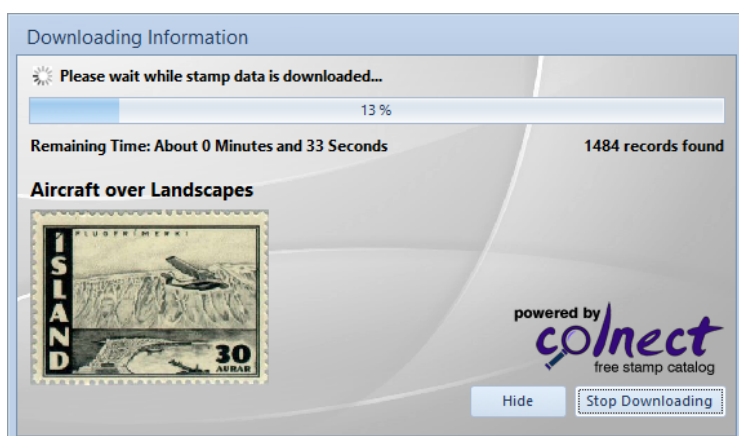
If you click the dropdown button you get the list of keywords with numbers of stamps available.

- Search by Year of Issue:

This filter can only be used when Country or Keyword is selected. For example: if you have selected the country of Algeria and 1937 as the year of issue, all stamps issued in Algeria in 1937 will be displayed.

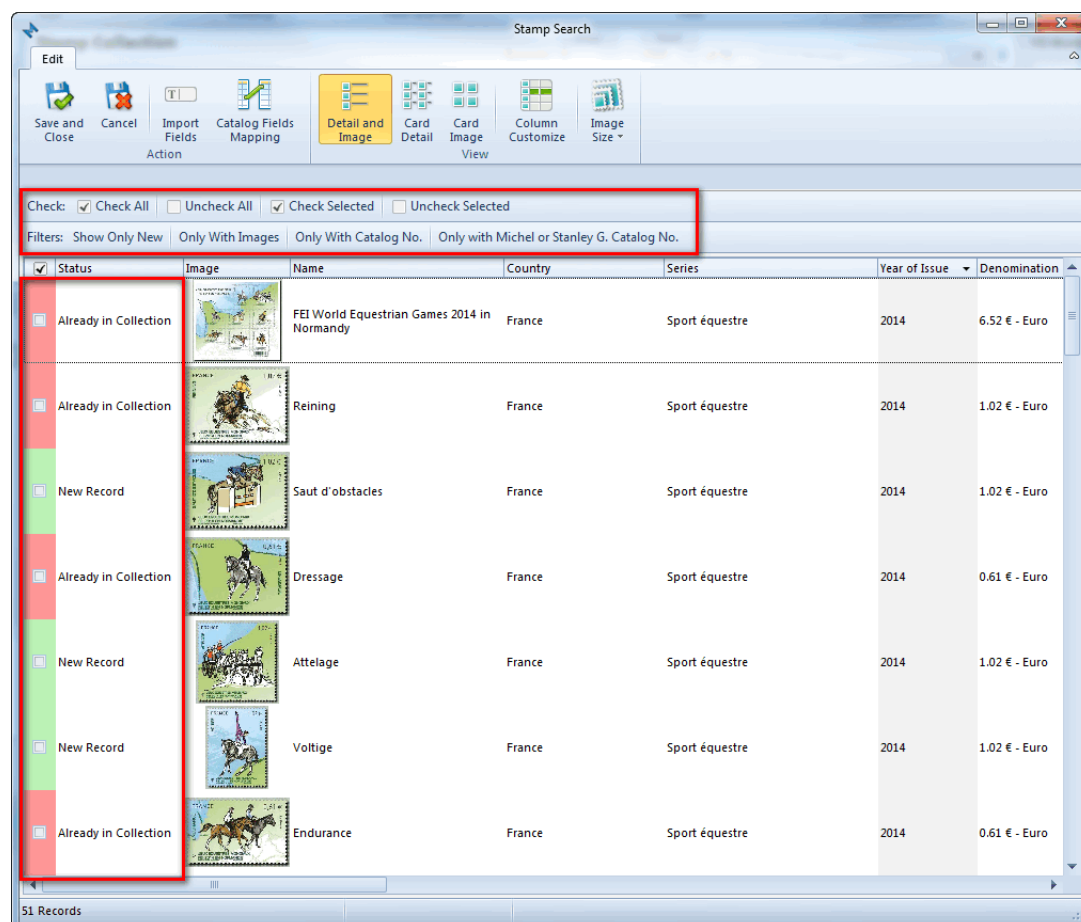
For multiple years of issue click the 'Select years' button to get the list of all the years of issue. Select all or just a few individual years at a time.

Hit the 'Search' button and the download window appears. The download process can take a few moments (depending on the number of stamps being imported and on the speed of your internet connection):



After downloading has completed, a window with downloaded stamps pop ups. Simply check the ones you want to add to your collection. Another option is to use multiple check functions above the stamp list. After checking hit the 'Save and Close' button.

Stamps which are already in your collection are marked with red coloring and their status is displayed.



1. Check bar

Check or uncheck all the stamps on the list. You can also select individual stamps.

2. Filter bar - Filter the list of stamps by

- show only new
- only with images
- only with catalog number
- only with Michel or Stanley G. Catalog No.

3. View customization

It allows you to choose among different views and to customize columns.

You can also set a small, medium or large preview image size.

4. Import fields

Select importing fields for every stamp you want. In case you don't need certain data just uncheck it. Ignored fields are displayed in red letters under the Toolbar.

5. Catalog Fields Mapping

This feature allows you to customize the catalog codes import. You can set in which field should the catalog codes import.

IMPORTANT NOTE: When you download new data it appears in your collection list regardless of which filters are turned on. This is how you are able to edit them immediately and avoid searching for them. To refresh the filter simply click the magnifier in the search bar.

In case you don't find certain stamps, keep in mind that Colnect's database is being updated daily and may soon provide the missing stamps. So, you can always try to find it with automatic import after some time.

Adding Stamps Manually

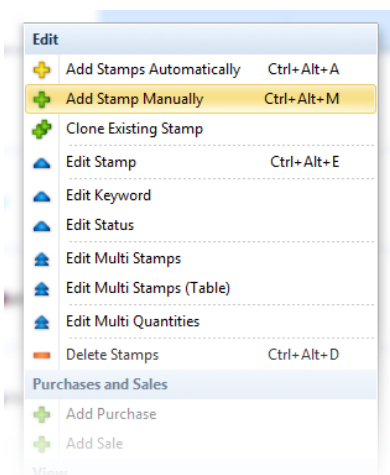
If automatic import doesn't contain all the data, you can still add stamps to your personal database manually by using the 'Add Stamp Manually' option.

To get there:

- simply click the 'Add Stamp Manually' button in the Toolbar or use the 'Ctrl+Alt+M' shortcut or



- right-click the collection list (even if it is empty) and select 'Add Stamp Manually'.



The Stamp Properties window pops up. There are several different tabs with different fields to fill out, for example standard text/numerical fields and two types of fields which are linked to your List Items, known as 'Lookup List' field. All the available fields are optional, so you don't have to fill them all out. Just enter the data that's relevant to you. You can add some basic data and return later to add more.

The Stamp Properties window has a number of different types of fields. There are standard text/numerical fields, checkboxes, combo boxes and two types of fields which are linked to your List Items, known as 'Lookup List' fields.

Standard Text/Numerical Fields

Each page of the Edit Stamp Properties window contains a number of standard text/numerical fields. These fields are used for storing unique information. Some fields may contain text and numbers, others are limited to numerical values only. For example, the Print Run field will always be a numerical value, so entering text into that field is not permitted.

Combo Boxes

In Combo boxes (Condition, Hinged, Gum Condition or Shape and Material) you choose from fixed properties in the list.

Lookup List Fields

There are two types of Look up fields.

Country is the first look up field where you can quickly select the country from the existing (fixed) list.

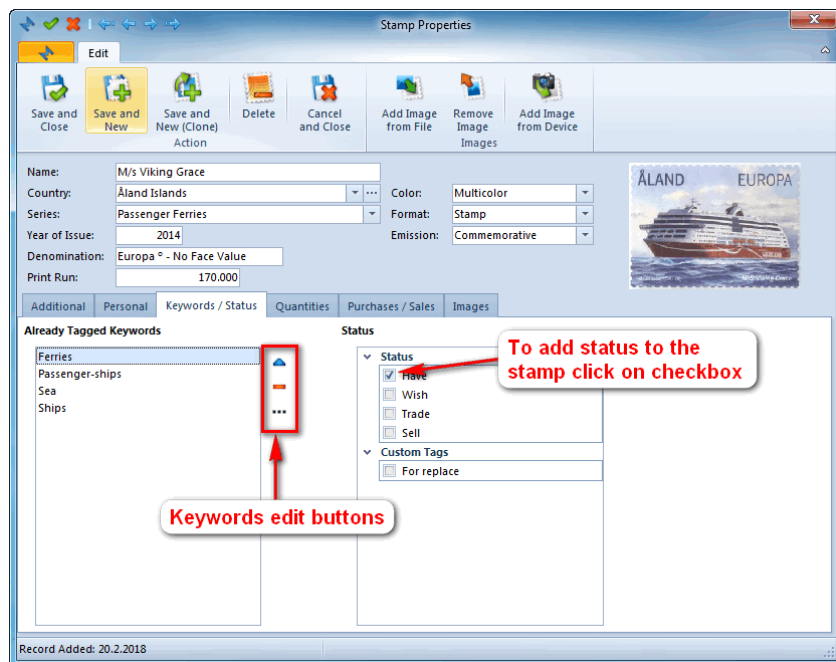
If you want to add a country that is not in the list yet, click the three dots button and write it in the left column of the pop up window. Then click the 'Add and Save' button and close it. After that, the new country will be added to the dropdown list for future use.

The second type of look up fields are Series, Color, Format, Emission, etc. that are gathering data from your list of stamps.

In dropdown list the data based on your collection list is displayed, but you can add new category in all of them anytime. Just write new keyword in field and after you save your changes, the new series, color, format and emission value will be added to the drop down list for future use.

Editing Keywords and Status

In the Keywords/Status tab you can find list of already tagged keywords (if it is empty not keywords have been tagged) and a list of statuses.



Next to the keywords list you can find three buttons.

If you click the blue triangle the Select Keywords list appears. You can click on the checkbox to add a keyword to a stamp.

The orange minus button deletes the keyword from the stamp's list.

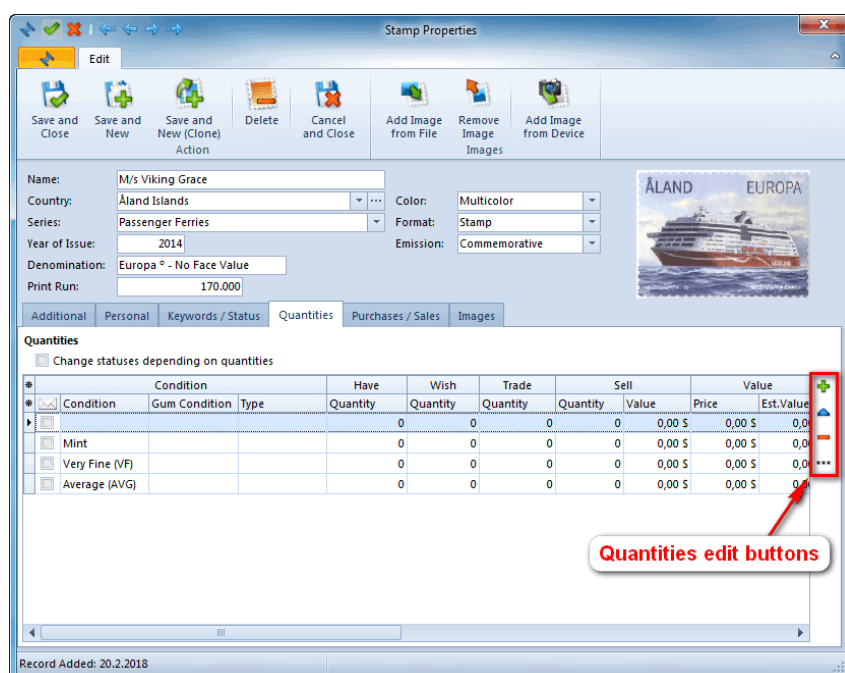
If there is no appropriate keyword in the look up list, click the three dots button to add the keyword to it.

For adding status to a stamp, simply click the checkbox in the status list.

In the Keywords tab, you choose from the existing checkbox list, but you can also add your own keyword. Just write down the name in the left column, click the Add button and it will appear in the right column. By clicking Save and Close, it will appear in the statuses list, so you don't need to add it again.

Editing Quantities

In the Quantities tab you can add or change the stamp inventory information.



In the table you can find the default (pre-inserted) inventory information. You can simply add or change information in the table or use the buttons next to it.

The green plus button means Add the new row to list.

The blue triangle button is for editing the selected row.

The orange minus button deletes the selected row from the list.

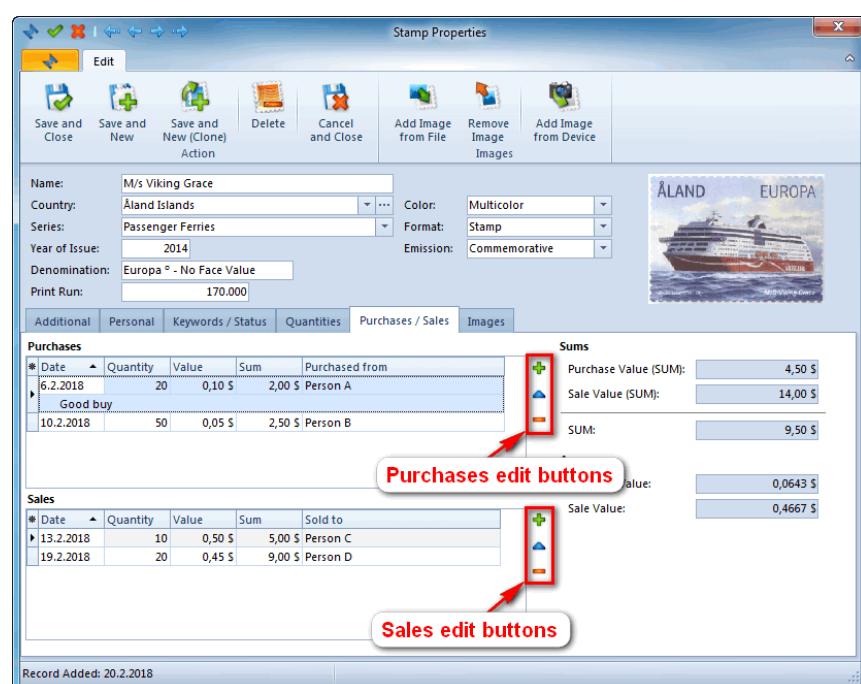
If you want to change default (pre-inserted) inventory information, click the three dots button to change it.

In the tab you can also find parameter 'Change statuses depending on quantities' which will change system statuses depending on inserted quantities. For example: If you change Have quantity into 10, Wish into 0, Trade into 5 and Sell into 0 the statuses Have and Trade will be enabled and the statuses Wish and Sell will be disabled.

More about Quantities is described in the topic: [Quantities](#).

Editing Purchases and Sales

In this tab you can edit your purchases and sales.



Next to the tables you can find editing buttons.

The green plus button means Add the new purchase/sale.

The blue triangle button is for editing the selected purchase/sale.

The orange minus button deletes the selected purchase/sale.

On the right side of the tab you can see the sums and the average values.

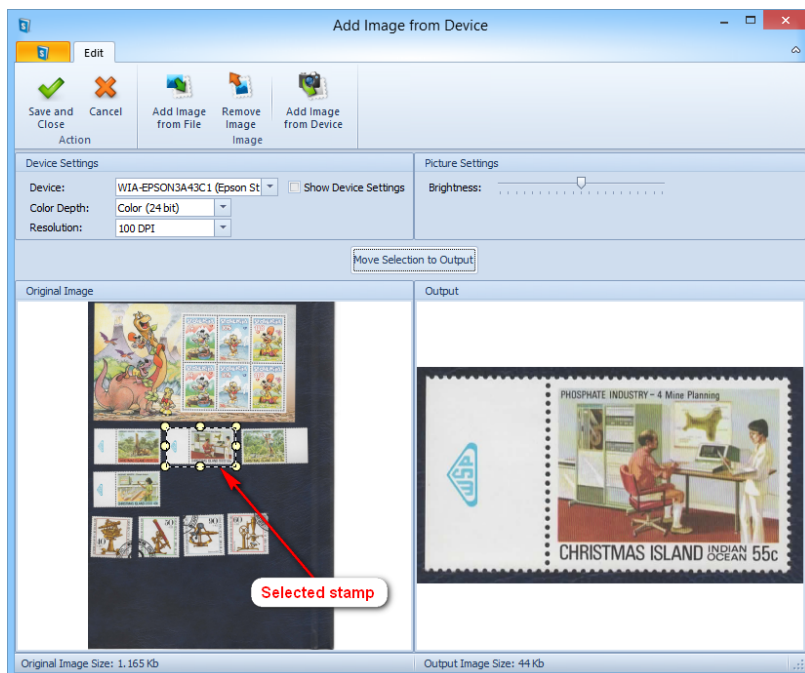
More about Purchases and Sales is described in the topic: [Purchases and Sales](#).

Adding Images

You can use two options for adding images:

- Add Image from File or
- Add Image from Device.

You can add images from devices that support a Twain driver.



To get an image from a device please select the Device first and choose the quality of image with Color Depth and Resolution parameters. Then click the 'Add image from device' button in the Toolbar to start the image adding process. After the process has completed, the image appears below. On the left side is the original image and on the right is the output image. If you have scanned multiple stamps, you can select a single one by clicking on the image and drawing rectangle around the stamp. Then click the 'Move Selection to Output' button and the selected area will appear in the Output window on the right. If you are satisfied with the output image, click 'Save and Close' in the Toolbar.

IMPORTANT NOTE: The scanned image will be preserved for future use. If you have scanned multiple stamps you will not have to scan them again. Please be aware that the image size will affect the program's speed. So try to keep images as small as possible. The recommended size is 14Kb - 40Kb.

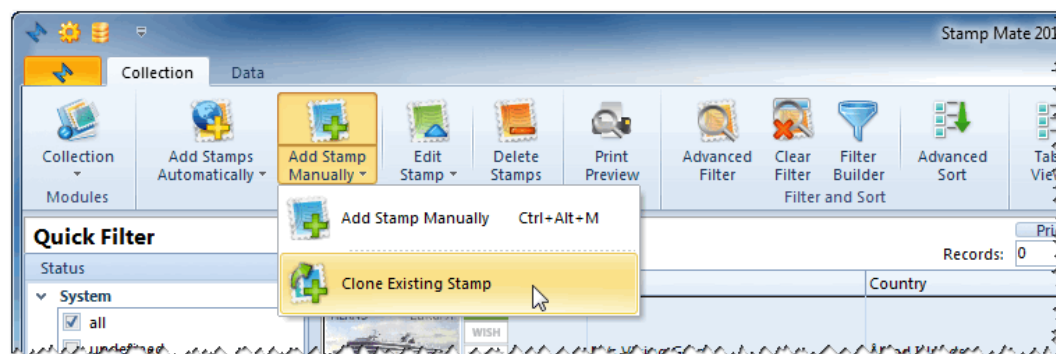
Clone Existing Stamp

Another option in the 'Adding Stamps Manually' dropdown menu is 'Clone existing Stamp'. With this option, you can simply duplicate existing stamp in your collection list.

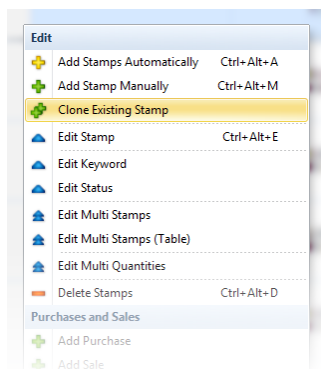
NOTE: You can't use this option in an empty database. Cloning is only possible with existing data.

To get there:

- click the 'Add Stamp Manually' button in the Toolbar and select 'Clone Existing Stamp' in the dropdown menu or



- right-click on the collection list and select 'Clone Existing Stamp'.



The form that appears is the same as for Adding stamps, except that the fields are already filled with data from the existing stamp.

Find out more about 'Stamp property window' under [Adding Stamps Manually](#).

Editing Stamps

Stamp Mate allows you to edit your stamp collection by using different editing features.

They are divided in four topics:

- [Edit Stamp](#)
- [Multi Edit](#)
- [Edit Keywords](#)
- [Edit Status](#)

Edit Stamp

Editing stamps in table view without opening Stamp Properties window

The fastest way to edit stamps is in table view without opening Stamp Properties window. Now you can edit stamp properties by double clicking the record that you want to edit. You can click anywhere in the row, except on the image (this will open the Stamp Properties window).

In order to disable this option, you must go to [Settings](#) and in the 'Other' tab you uncheck the 'Enable Column Editing' checkbox.

Editing stamps in the Detail window

In order to edit Stamp Properties, you can double click the Detail window on your right and change the properties line by line.

Editing stamps using Stamp Properties window

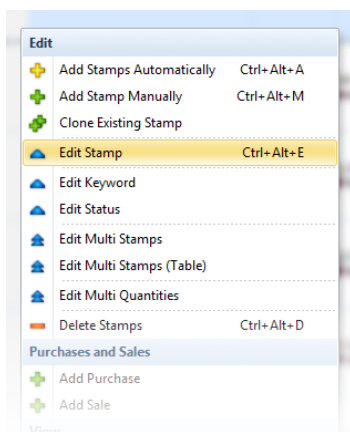
Still, the most common way for Stamp editing is through the Stamp Properties window.

There are three ways to get there :

- simply double click the image next to the stamp you want to edit in the collection list (if you have disabled table editing in [Settings](#) you can double click anywhere in the row of record you want to edit)
- select a stamp and click the 'Edit stamp' button in the Toolbar or use the 'Ctrl+Alt+E' shortcut or



- right-click the stamp you want to edit and select 'Edit stamp'.



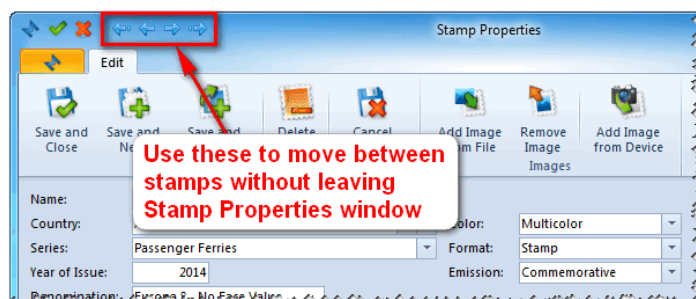
When you want to edit Stamp Details, just browse through the different tabs and see what information can be added and edited. All the available Fields are optional, so you don't have to fill them all out.

When done, hit the 'Save and Close' button and watch the Collection list change to reflect the changes you have made.

Find out more about the 'Stamp Property window' in [Adding Stamp Manually](#).

Editing Stamps one by one without leaving the Stamp Properties window

Stamp Mate allows you to edit stamps one by one without having to leave the Stamp Properties window. So if you need to change one field for multiple stamps with different values, you can use this option.



When you change value for one stamp and want to move to another, you don't need to click 'Save and Close' button but just click the blue arrows on the top of the window to move to the next one. The program will ask you for saving confirmation. You can disable this confirmation window in [Settings](#) and changes will be saved by default.

Edit Multi Stamp

Edit View

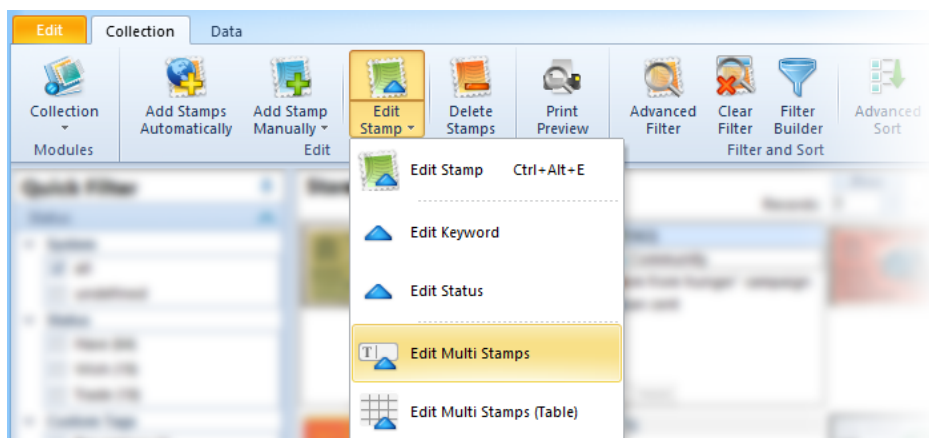
NOTE: You can't use this option in an empty database. Multi Edit is only possible with existing data.

The 'Edit Multi Stamp' option allows you to edit multiple stamps simultaneously. When you need to add identical information in a field for several stamps, the Multi Edit function makes it much faster than adding information one-by-one for every single stamp.

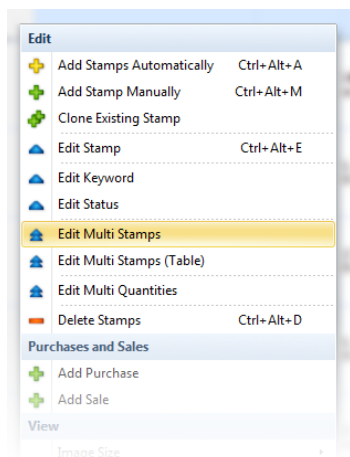
Select the stamps you want to edit. You can use the standard Ctrl+click and Shift+click to select multiple stamps. You can hold CTRL+left mouse click to select.

Then:

- click the 'Edit Stamp' button in the Toolbar and select 'Edit Multi Stamps' in the dropdown menu or



- right-click the collection list and select 'Edit Multi Stamps'.



All values you enter here will be applied to all selected stamps. If you leave a box empty, that field will be left untouched for all selected stamps.

If you check the box next to an empty field for all selected stamps this field will be cleared.

When you're done making changes, click Save and Close.

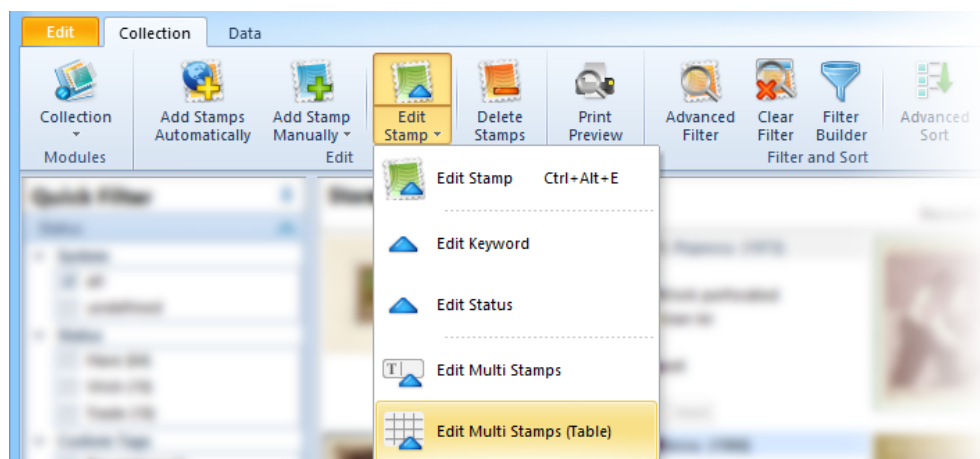
IMPORTANT NOTE: Be careful, it is possible to overwrite a lot of data with a few button clicks, so please remember that in the Edit Multiple Stamps mode, all selected stamps are affected by your changes.

Table View

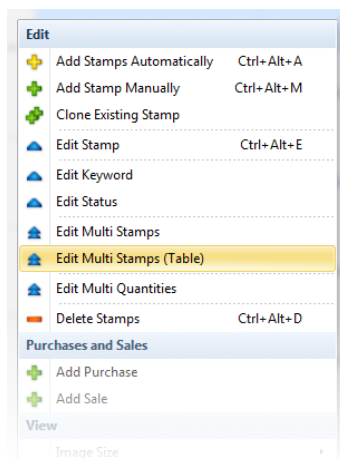
If you want to simply edit and manage your collection list in a table, you can use the Table View option. For this option, you don't have to previously select stamps. You will be able to edit all the stamps from the main view but if you select more than one stamp only selected stamps will appear in the table.

To get there:

- click the 'Edit Stamp' button in the Toolbar and select 'Edit Multi Stamps (Table)' in the dropdown menu or



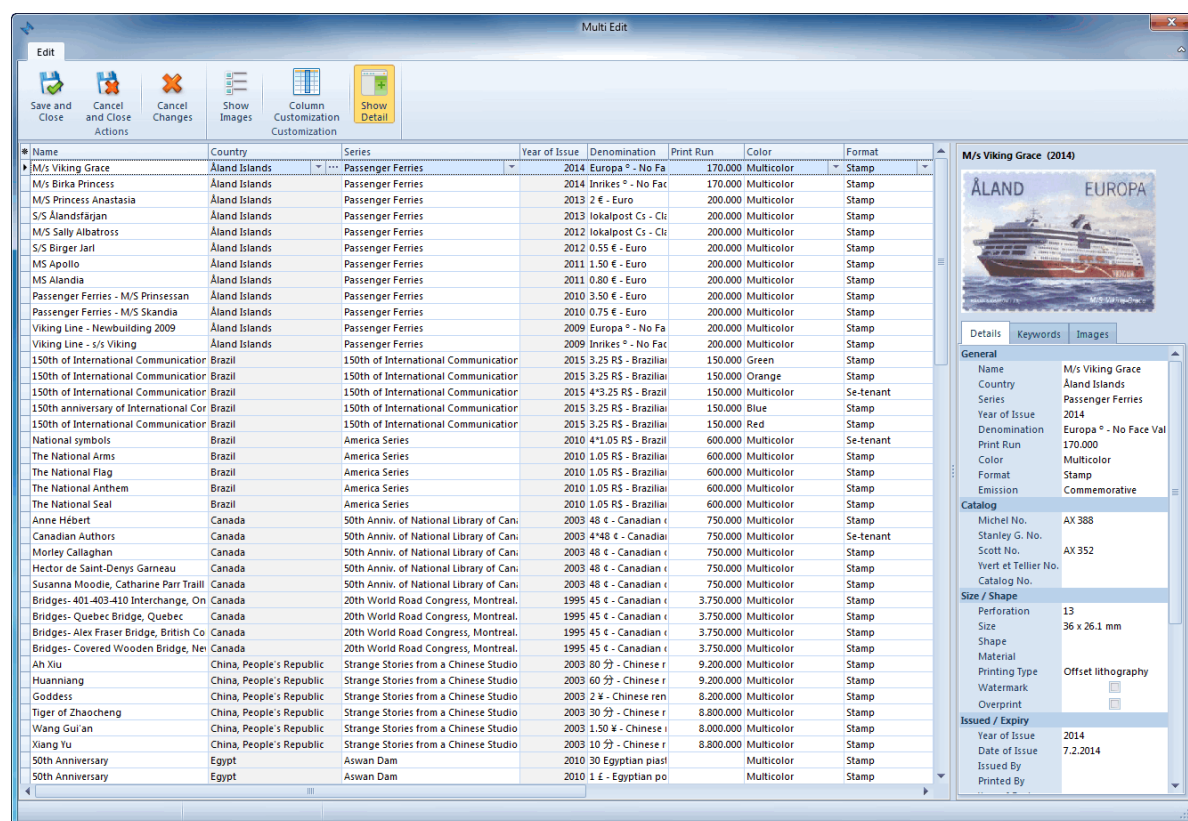
- right-click the collection list and select 'Edit Multi Stamps (Table)'.



The Multi Edit Table view is a different view of your collection list, where you can simply move across your data in a table and change the fields. With a click on any field, the dropdown arrow appears and you can select the data from the look up list or simply use the 'CTRL+C' and 'CTRL+V' option (copy paste). By copy pasting data you can edit loads of fields in a very short time.

Buttons in the Toolbar:

- The 'Column Customization' button allows you to drag and drop columns anywhere in the table,
- the 'Show Images' button displays an image of the stamp in the first column,
- the 'Show Detail' button displays a window on the right side with all the data of the selected stamp.



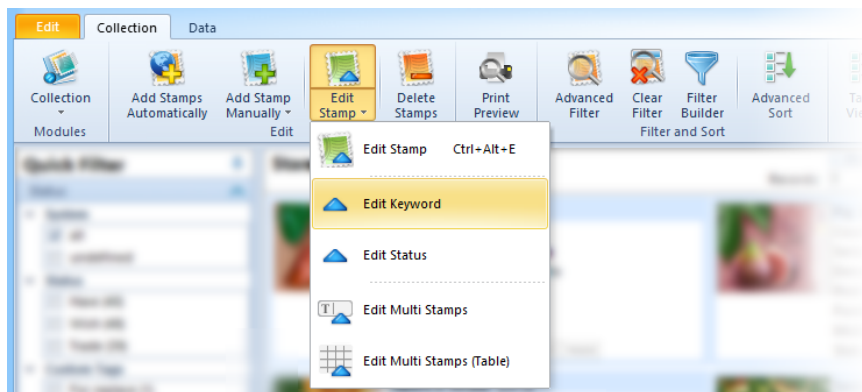
Edit Keyword

The 'Edit Keywords' option allows you to change keywords for single or multiple stamps.

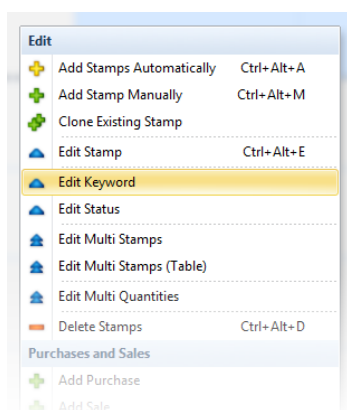
To get there:

If you want to edit keywords just for one stamp simply select a single one. For editing keywords for multiple stamps (at the same time) select the stamps you want, then:

- click the 'Edit Stamp' button in the Toolbar and select 'Edit Keyword' in the dropdown menu or



- right-click the collection list and select 'Edit Keyword'



First select the stamp you want to edit and click 'Edit Keyword'. Then check all the keywords that are relevant for a selected stamp in the Keywords window. There might already be some keywords checked.

Single Edit keywords

Only keywords that belong to the selected stamp appear in status window. All the changes will affect only the selected stamp.

Multi Edit keywords

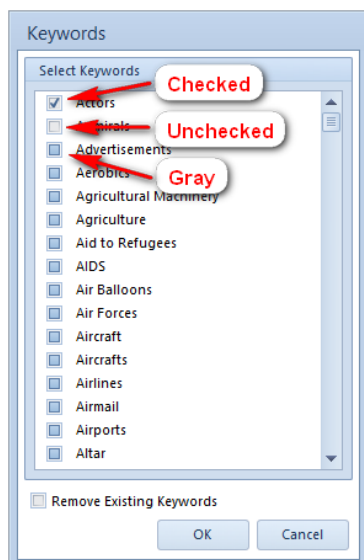
You can select multiple stamps and change their keywords all at a time.

In the Keywords window, you can set three different checkbox statuses, but the gray checkbox is the default one:

Click one (checked) - all selected stamps will receive the selected keywords.

Click two (unchecked) - status will be removed from the selected keywords.

Click three (gray checkbox) - this will not affect the selected keywords.



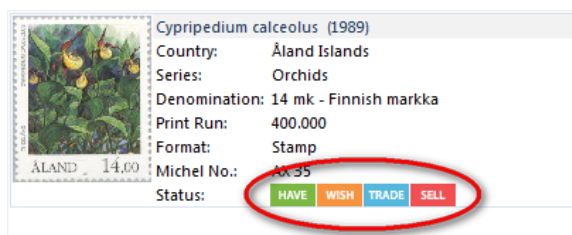
In the bottom of the window, there is the checkbox 'Remove Existing Keywords'. If you check it, all the keywords of the selected stamps will be removed.

Edit Status

You have different options for changing stamp's statuses.

Option 1:

The simplest one is to choose among three most common statuses. To do so, just single click the icons HAVE / WISH / TRADE / SELL next to an image of a stamp. An active icon is colored, and an inactive one just has a gray frame. It is possible to disable this option in [Settings](#).



Option 2:

You can change statuses in the detail window on the right.



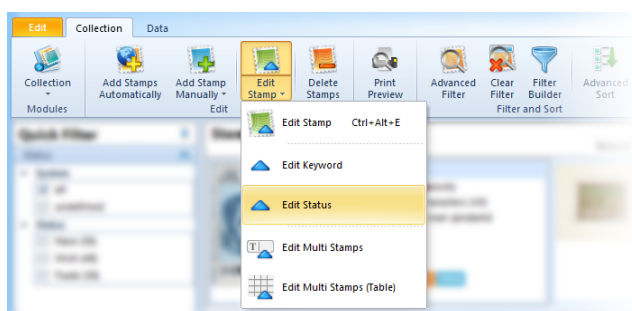
Option 3

You can change statuses of single or multiple stamps by using the 'Edit Status' option.

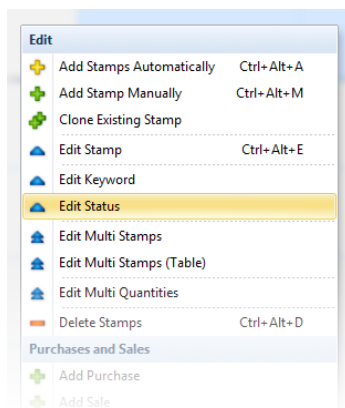
To get there:

If you want to edit the status of just one stamp, simply select a single stamp. For editing statuses of multiple stamps (at the same time), select the stamps you want, then:

- click the 'Edit Stamp' button in the Toolbar and select 'Edit Status' in dropdown menu or



- right-click anywhere in the collection list and select 'Edit Status'.



Single Edit Status

In status window appear only statuses that belong to selected stamp. All the changes will effect only selected stamp.

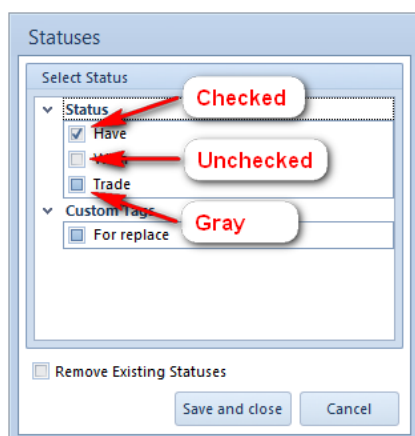
Multi Edit Statuses

In the status window, you can set three different checkbox statuses, but the gray checkbox is the default one:

Click one (checked) - all selected stamps will receive the selected status.

Click two (unchecked) - status will be removed from the selected stamps.

Click three (gray checkbox) - this will not affect the selected stamps.



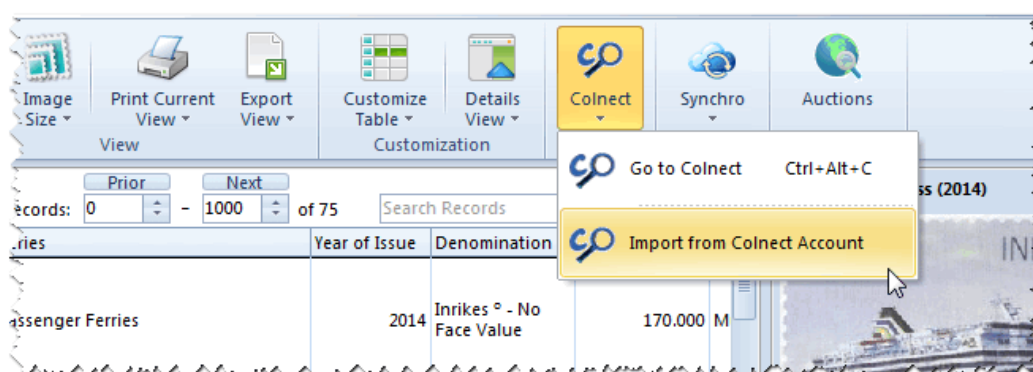
In the bottom of the window, you find the 'Remove Existing Statuses' checkbox. If you check it, all the statuses of the selected stamps will be removed.

Import Stamps from Colnect Account

If you already have Colnect account you can simply import all the information.

To get there:

- click the 'Colnect' button in the Toolbar and select 'Import from Colnect Account' in the dropdown menu



On the window which appears you must insert your Colnect user name and click 'next' button.

Import from Colnect

User's information

Colnect Username (Member Login):

Colnect User

< Back Next > Cancel

The information about your account will be downloaded. After that the window with parameters will appear. Here you can select which group of stamps you want to import. You can choose if the status information will be imported and if existing statuses will be changed.

After selecting parameters click 'next' button and the information will start importing. The process can take several minutes (it depends on the size of collection and speed of your internet connection).

Import from Colnect

Search results

☒ Collection - 40306 records found

☒ Wish - 13757 records found

☒ Swap - 16389 records found

☐ Sell - 0 records found

Import parameters

☒ Import system statuses (Collection, Wish, Swap, Sell)

☒ Change system statuses if record already exists

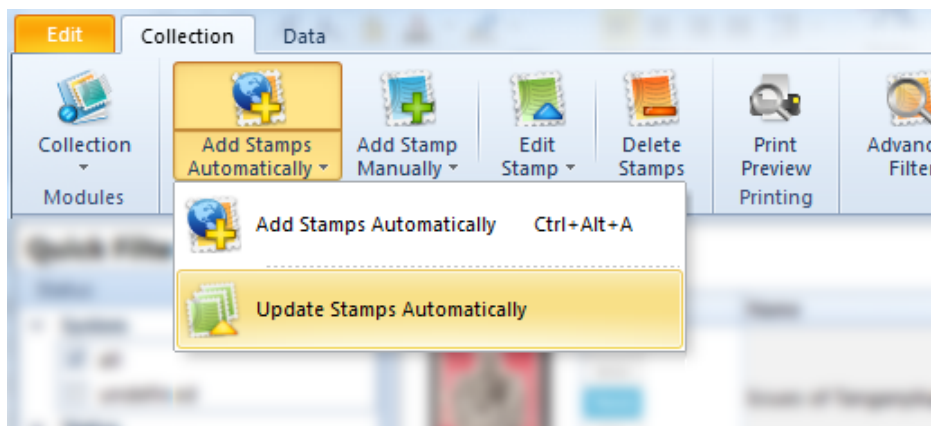
< Back Next > Cancel

Update Stamps Automatically

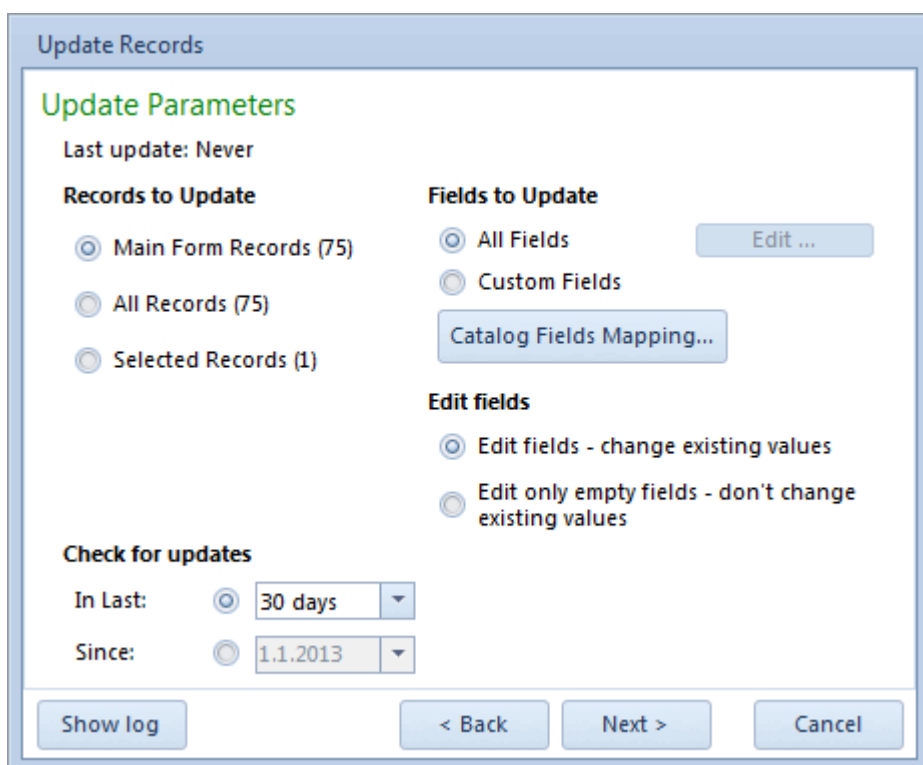
The data in Colnect database are constantly improving and to get these improvements you have to update your current records.

To get there:

- Click the 'Add Stamps Automatically' button in the Toolbar and select 'Update Stamps Automatically' in the dropdown menu.



In the windows that appear you can select the items and fields you want to update. With “Check for updates” parameter you determine the time period of changes.



After setting the parameters to your needs click 'Next' button.

The program will search for records that have been changed. The process can take several minutes (it depends on the size of collection and speed of your internet connection).

When the search is finished the 'Search results' will appear.

To start updating records click 'Next' button. The process can take several minutes (it depends on the size of collection and speed of your internet connection).

After that the 'Update result' will appear with number of records updated.

In the Left-Bottom corner you can find 'Show log' button. Here you can find the Update log with update details. All the Update logs are stored into database so you can check them later.

Quantities

With this tool you can manage inventory information for each stamp.

Here you can store your Have, Wish, Trade and Sell quantities, Sell and Catalog values, Postmark and Album information. All these information you can store for individual Condition and Type. You can also store information if the stamp is on the letter or not.

You can manage inventory information in several different ways.

Editing information in table view without opening any window

The fastest way to edit stamp inventory information is in the table on the bottom of the Collection window. Here you can edit information by double clicking on a record that you want to edit.

In the table you will find the default (pre-inserted) inventory information. If you want to change default (pre-inserted) inventory information, click the three dots button on the right side next to a table to change it. More about that is described in the topic: [Lookup Data](#).

Condition	Gum Condition	Type	Have Quantity	Wish Quantity	Trade Quantity	Sell Quantity	Value	Price	Est. Value	Value 2	FDC	Postmark
Mint			10	0	5	5	1,20 \$	0,50 \$	1,00 \$	1,20 \$		
Very Fine (VF)			0	0	0	0	0,00 \$	0,00 \$	0,00 \$	0,00 \$		
Average (AVC)			0	0	0	0	0,00 \$	0,00 \$	0,00 \$	0,00 \$		

Here you can find two parameters:

- Hide empty records - This will hide all the rows without any information. If this parameter is disabled, the rows with values are colored green.
- Change statuses depending on quantities - This will change system statuses depending on inserted quantities. For example: If you change Have quantity into 10, Wish into 0, Trade into 5 and Sell into 0 the statuses Have and Trade will be enabled and the statuses Wish and Sell will be disabled.

Editing information using Quantity window

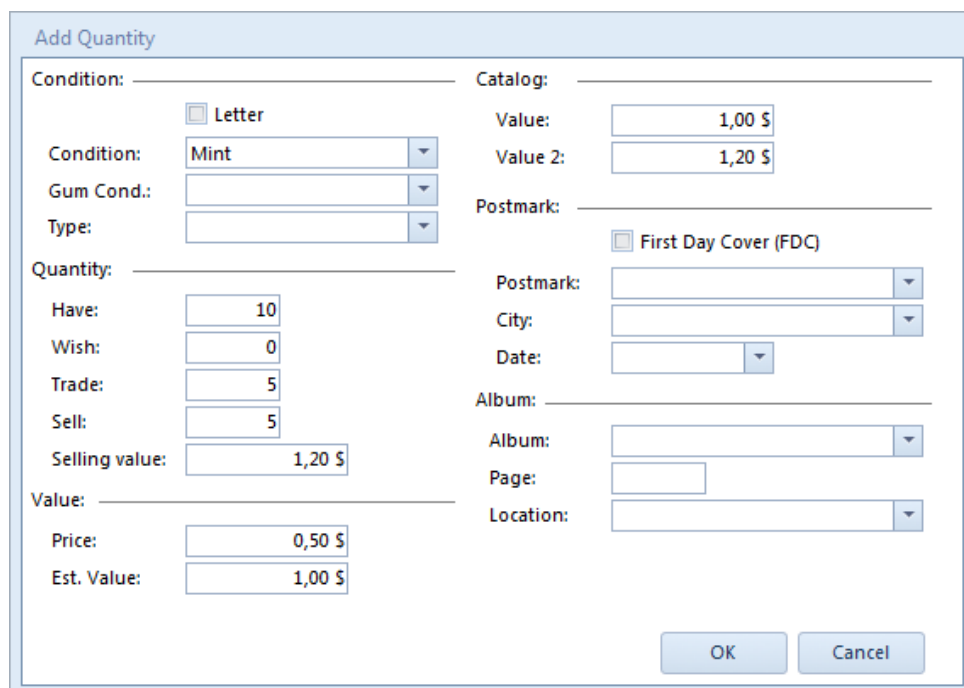
Next to the table you can find four buttons.

The green plus button means Add the new row in to list.

The blue triangle button is for editing the selected row.

The orange minus button deletes the selected row from the list.

If you want to change default (pre-inserted) inventory information, click the three dots button to change it. More about that is described in the topic: [Lookup Data](#).



Add Quantity

Condition: ☐ Letter

Condition: ▼

Gum Cond.: ▼

Type: ▼

Quantity:

Have:

Wish:

Trade:

Sell:

Selling value:

Value:

Price:

Est. Value:

Catalog:

Value:

Value 2:

Postmark:

☐ First Day Cover (FDC)

Postmark: ▼

City: ▼

Date: ▼

Album: ▼

Album: ▼

Page:

Location: ▼

OK Cancel

Editing information using Stamp Properties window

More about that is described in the topic: [Adding Stamps Manually](#).

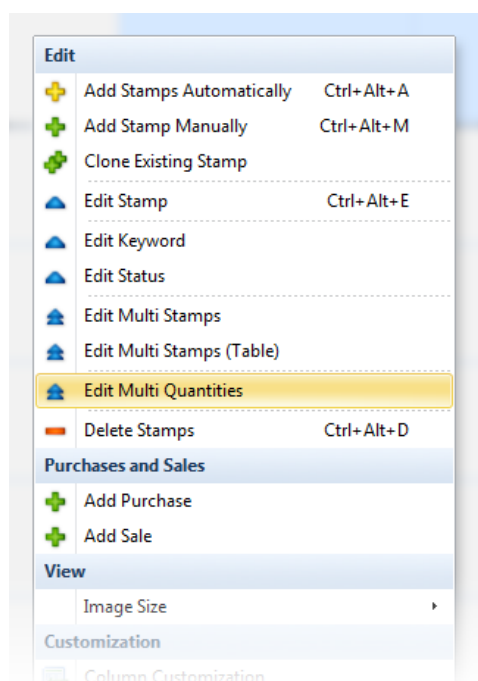
Edit Multi Quantities

IMPORTANT NOTE: Be careful, it is possible to overwrite a lot of data with a few button clicks, so please remember that in the Edit Multi Quantities mode all selected stamps are affected by your changes.

Select the stamps you want to edit. You can use the standard Ctrl+click and Shift+click to select multiple stamps. You can hold CTRL+left mouse click to select.

Then:

- right-click the collection list and select 'Edit Multi Quantities'.



All values you enter here will be applied to all selected stamps. On the top you can see the count of selected stamps.

If you leave a box empty, this field will be left untouched for all selected stamps.

If you check the box next to an empty field for all selected stamps this field will be cleared.

On the top you have two parameters:

- Edit existing quantities - All the values will be changed into a new value
- Add new record in quantities - Leave the existing values intact and add the new record in quantities.

When you're done making changes, click OK.

Purchases and Sales

Here you can store all your purchases and sales for each stamp. You can also store your swap information.

You can add or edit purchases and sales in several different ways.

Editing information in main Collection window

The fastest way to edit stamp inventory information is in the main Collection window.

On the bottom of the window you will find two tabs (Purchases and Sales).

Date	Quantity	Value	Sum	Purchased from
7.10.2014	20	0,10 \$	2,00 \$	Person Test A
1.11.2014	50	0,05 \$	2,50 \$	Person Test B
70		4,50		

Summary:

- Purchase Sum: 4,50 \$
- Sale Sum: 17,00 \$
- SUM: 12,50 \$
- Average: 0,0643 \$
- Purchase Values: 0,0643 \$
- Sale Values: 0,5667 \$

Next to the table are three buttons.

The green plus button means add the new purchase/sale.

The blue triangle button is for editing the selected purchase/sale.

The orange minus button deletes the selected purchase/sale.

On the right side of the tab you can see sums and average values.

If you click green plus button or blue triangle button the Edit window appears.

Here you can enter values about purchase or sale. For adding new person click three dots button and the People lookup will appear.

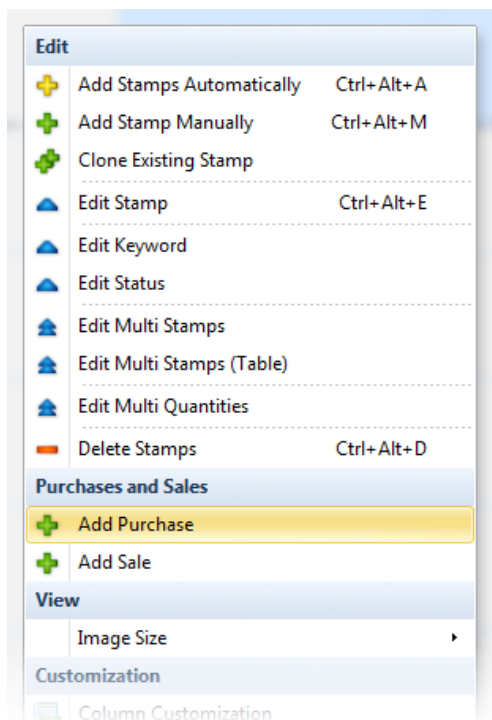
Editing information using Stamp Properties window

More about that is described in the topic: [Adding Stamps Manually](#).

Add multi purchases and sales

Select the stamps you want to add purchase or sale. You can use the standard Ctrl+click and Shift+click to select multiple stamps. You can hold CTRL+left mouse click to select.

Then right-click the collection list and select 'Add Purchase' or 'Add Sale'.



Values you enter here will be applied to all selected stamps. On the top you can see the count of selected stamps.

Cumulative Overview - Sums

Cumulative overview allows you to view the sums of quantities and values of all the records.

The View is divided into two views: Cumulative view and Total sum of all the records.

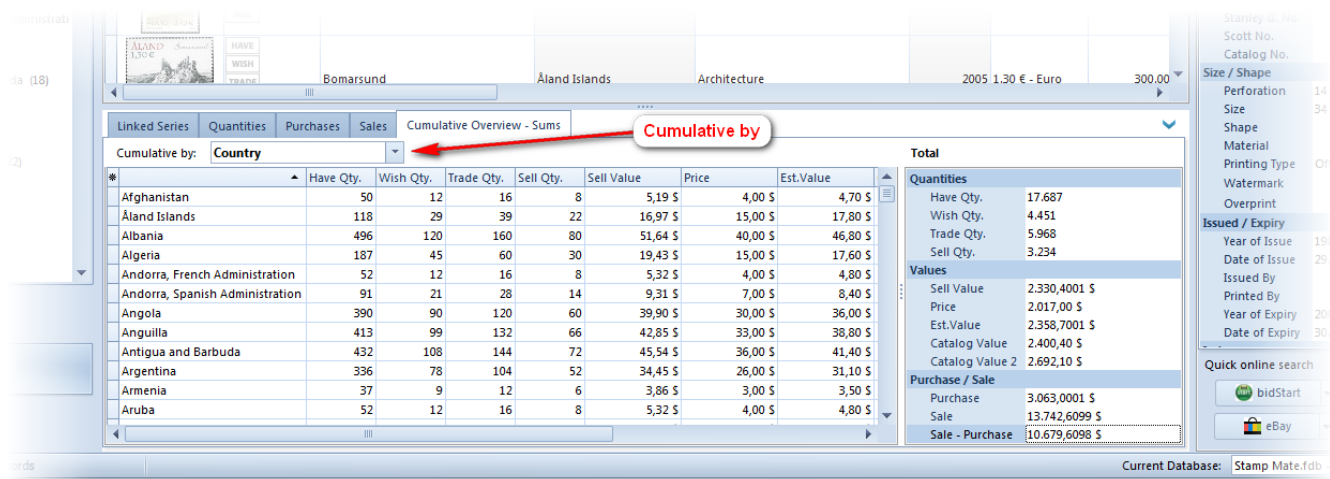
The Cumulative view on the left side has a dropdown menu with different categories among you can choose. Below you can find the list of information based on selected category with sums of quantities and values.

On the right side is Total sum window. Here you can find the sums of all the records in database.

IMPORTANT NOTE:

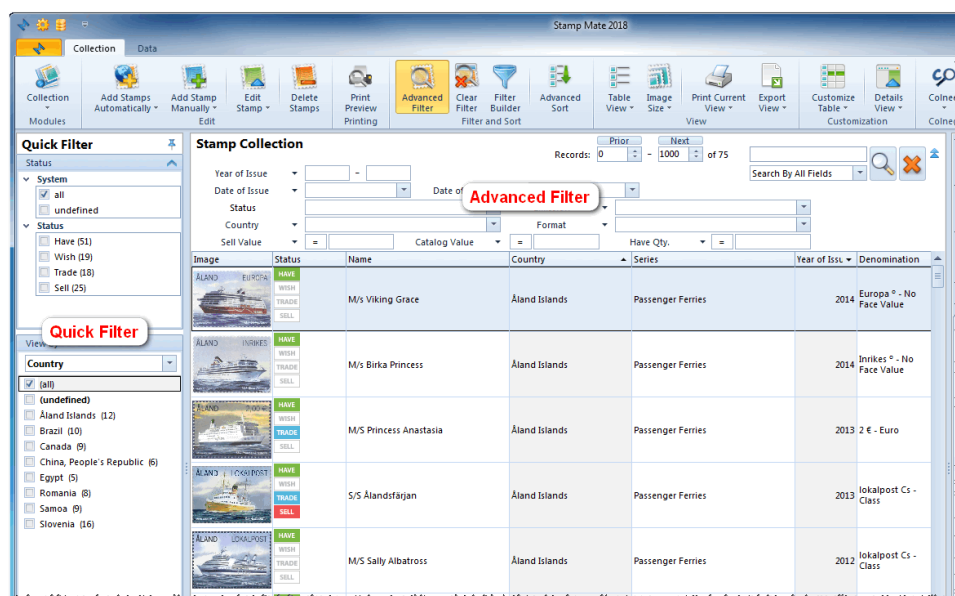
The filters effects the cumulative overview that offers you many possibilities for different cumulative views.

For example: If you select 'Algeria' and 'Austria' as Country in quick Filter you will have cumulative sums only for these two countries.



Filter, Search And Sort

Filter & Search



Quick Filter

The Quick Filter is in the navigation bar on the left side of your screen. It is divided into two groups: Status and View by.

In status group you find list of statuses with the number of stamps for each status - for example Wish (158) means that you have 158 stamps in your collection which are marked with the 'Wish' status.

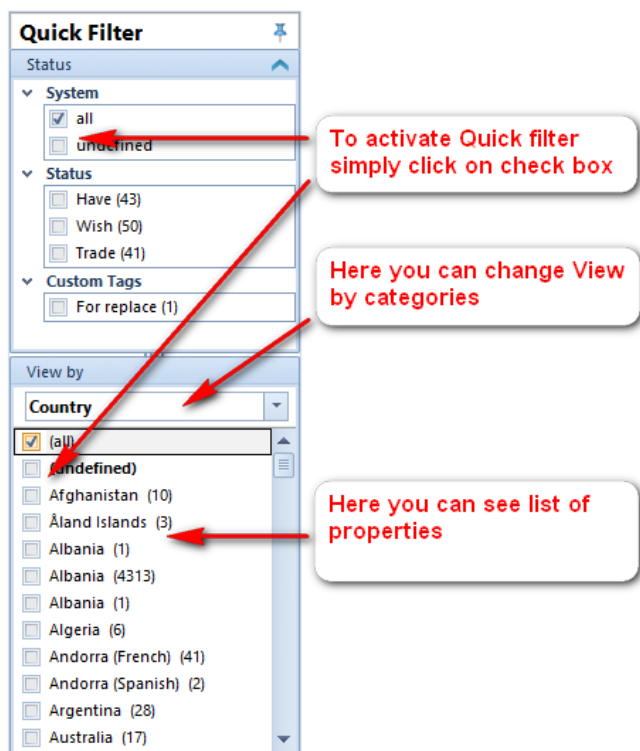
You can also find stamps with undefined statuses by selecting the 'Undefined' checkbox. These are stamps with no status defined.

To filter your collection, simply click the checkbox in front of statuses. You can also select multiple checkboxes.

NOTE: The 'Status' group affects the 'View by' group. For example: If you have selected the 'Wish' status in the 'Status' group and you choose 'Country' in the 'View by' group, only the countries from your wish list will be listed below.

View by group has a dropdown menu with different categories among you can choose and below a list of properties displays.

To filter your collection, simply click the checkbox in front of **statuses**. You can also select multiple checkboxes.



NOTE: Quick filter has a one-second delay.

Advanced Filter

The Advanced Filter option allows you to search/filter your data with more specific criteria.

Click the Advanced Filter icon in the Toolbar, or click on the blue arrow in the upper right corner of the Main View to make the Advanced Filter window appear.

Advanced Filter contains certain parameters (search fields). Black arrow in front of search fields allows you to set different filter criteria.

In the look up fields such as Country, Emission or Format only the previously imported parameters appear. You can select more than one parameter by checking multiple checkboxes.

In the upper right corner there is Search edit. You can search by all fields or select a single one from the list.

NOTE: Click on the magnifier icon to refresh the search list.

Results will be displayed in your Main View.

In the middle of the Advanced Filter window, there is a paging tool.

It's not a part of the Advanced Filter, but due to potentially large amounts of data in your collection list, the displayed records are limited to 1000 records per page. You can move through the pages by using the 'Prior' and 'Next' buttons. You can also change the number of displayed records by manually changing the value.

NOTE: When Advanced Filter is on the Advanced Filter window will turn yellow.

You can remove the filters by clicking the 'Clear Filter' button in the Toolbar. When the filter is cleared, the Advanced Filter window will turn white again and the whole collection list will be displayed in the Main View.

Sorting

To simply sort stamps in your collection list, click the table header in the Main View.

The most basic way to sort your stamps in the collection list is to click the column header of the field that you want to sort.

For example: If you want to sort by Series, click the header of the Series column in the list. Instantly, your list will rearrange in alphabetical order. For the other way round, just click the header again to reverse the order.

Stamp Mate even lets you sort multiple fields. Hold Shift key and click the headers.

NOTE: The Sort option is only available in 'Detail' and 'Detail and Picture' view.

Advanced Sort

For more advanced sorting, use the 'Advanced Sort' button in the Toolbar.

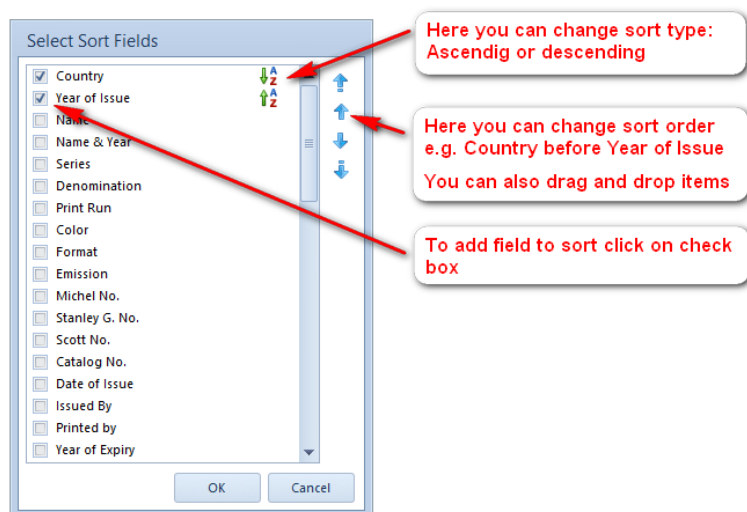
In the pop up window, you can select fields for sorting the stamps in your collection list.

You can change sort type from ascending to descending or opposite by clicking on the  icon.

In the right column there are arrows that can help you change the sort order (you can also drag and drop items)

For example: If you want to sort firstly by Country and secondly by Year the Country must be higher on the list than Year, but if you want to sort firstly by Year and secondly by Country, then you have to drag or move Year with arrows above the Country.

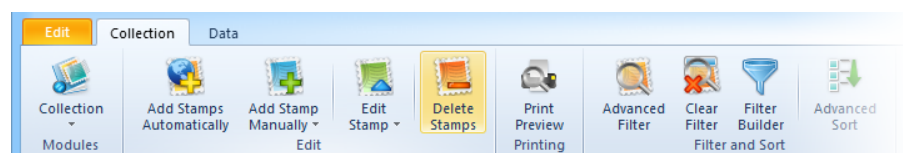
Click OK to refresh the sort.



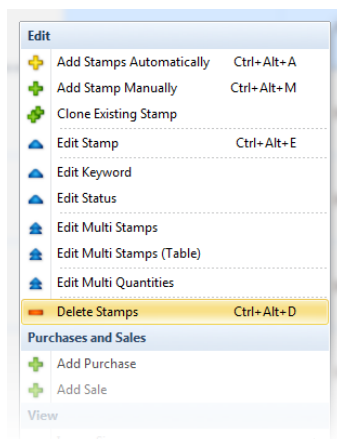
Delete Stamps

You can delete single stamps one by one or you can delete multiple stamps all at a time. For deleting multiple stamps you must first select the stamps using 'Ctrl+click' and 'Shift+click'.

- You can delete stamps by clicking the 'Delete Stamps' button in the toolbar



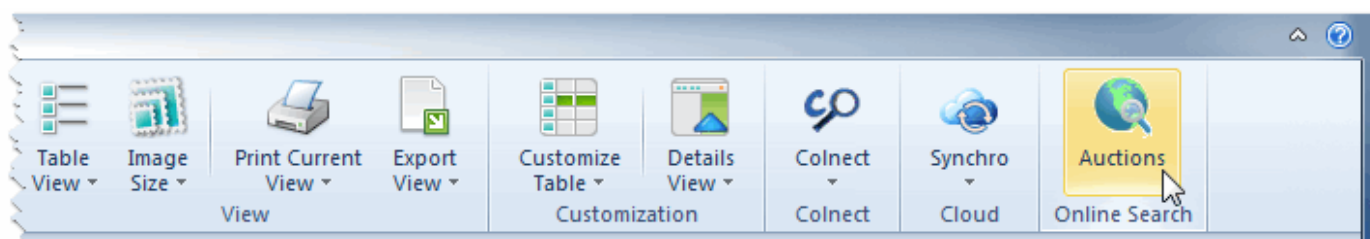
- or right clicking on the stamp and selecting the 'Delete Stamps' option.



Auctions - Online Search

With this tool you can easily search through online auctions. Just select the stamp you want to search and use the 'Online Auction' feature.

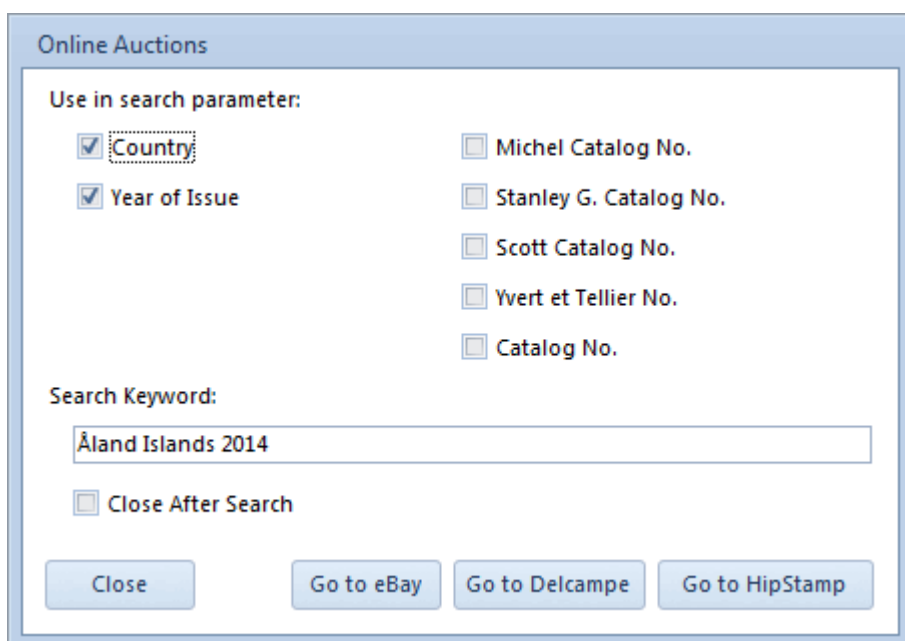
To get there click the 'Auction' button in Toolbar.



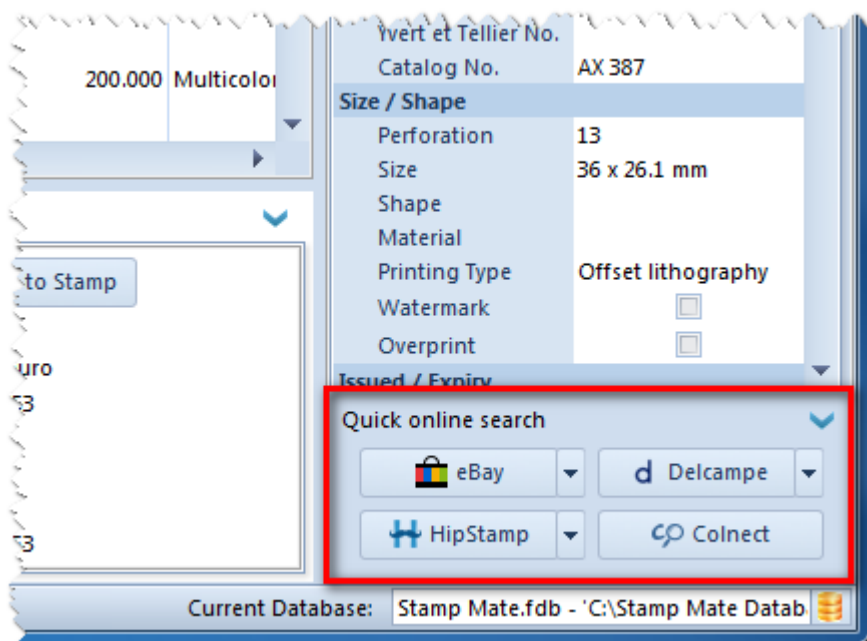
In the window that appears you can select the type of search keywords.

On the bottom you have three buttons to online auctions: eBay, Delcampe and HipStamp.

NOTE: In the settings you can choose which eBay you want to use (ebay.com, ebay.de, ...).



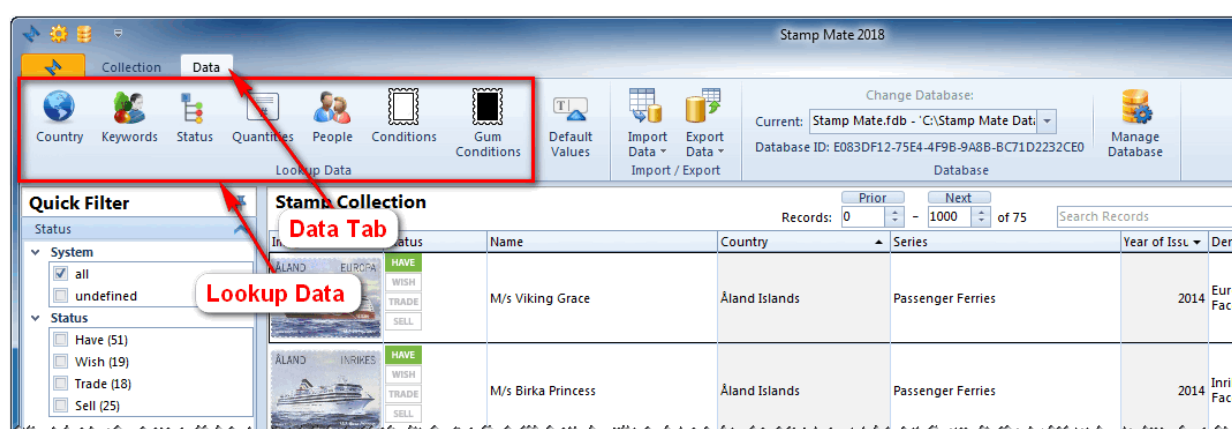
You can also use the Quick online search that you find on the bottom-right corner of the main Collection window.



Lookup Data

Stamp Mate contains some basic lookup data such as Country, Keywords, Status, Quantities and People. New lookup data is also added, if a downloaded stamp contains lookup data that is not already in the database.

You can also add/remove lookup data yourself by choosing the type of lookup data to add/remove on the Data-page of the ribbon:



Country

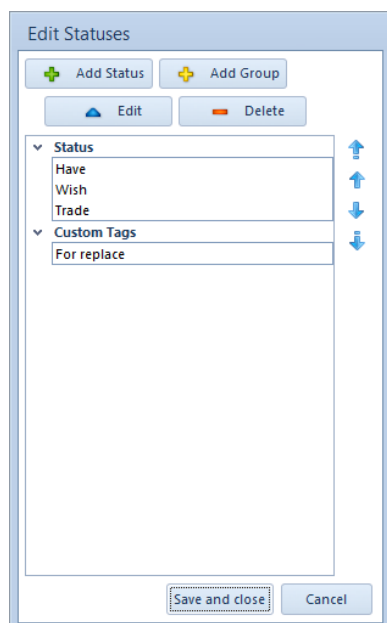
There is a list of available default countries. You can add and remove or rename countries from the list but you cannot remove or rename the system records.

Keywords

There are also default list keywords. You can add and remove or rename keywords from the list but you cannot remove or rename the system records.

Status

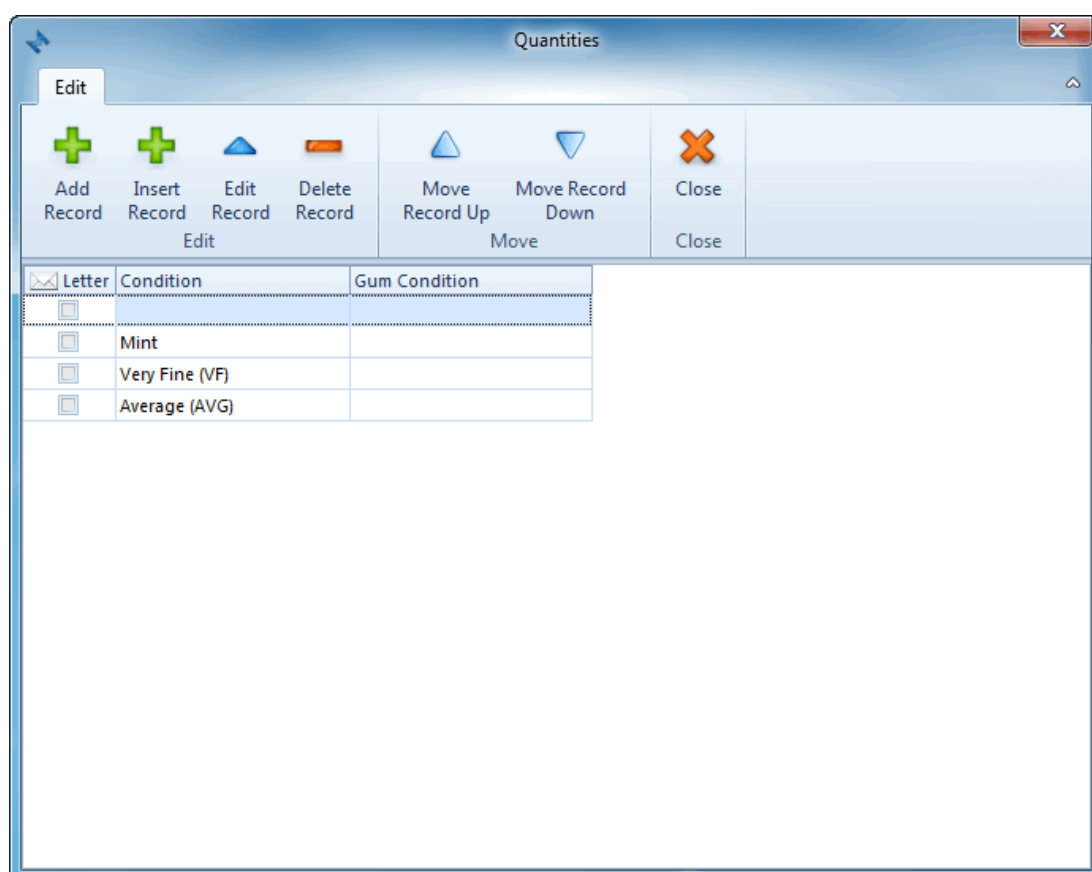
You have four main statuses, 'Have', 'Wish', 'Trade' and 'Sell', which you can sort with blue arrows on the right. You can Add Status or Add Group, Edit or Delete it. To save changes click Save and Close.



Quantities

Here you can change default values in quantities. With buttons 'Move Record Up' and 'Move Record Down' you can change the record's position.

NOTE: With changing records in this lookup you don't have influence on inventory information already added to the stamps.



People

Add, Edit or Delete people. The People are used in purchases and sales.

NOTE: With changing records in this lookup you also change the values already added to stamps. If you delete a person that person will be deleted from all purchases and sales.

People

Edit

Add Record Edit Record Delete Record Close

Search

Search Records

Name	eMail	Phone	Address
Person A			
Person B			
Person C			
Person D			

Condition

Add, Edit or Delete conditions. The conditions are used in quantities.

Conditions

Edit

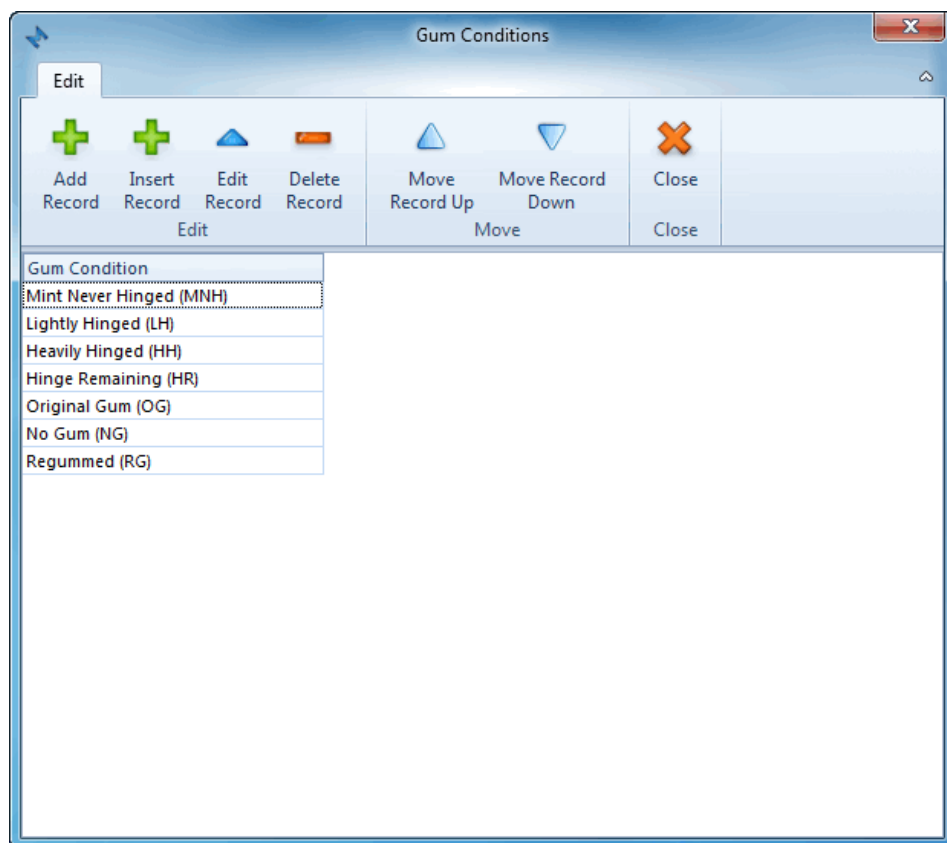
Add Record Insert Record Edit Record Delete Record Move Record Up Move Record Down Close

Condition

- Mint
- Extra Fine (EF)
- Very Fine (VF)
- Fine (F)
- Average (AVG)
- Poor
- Test

Gum Condition

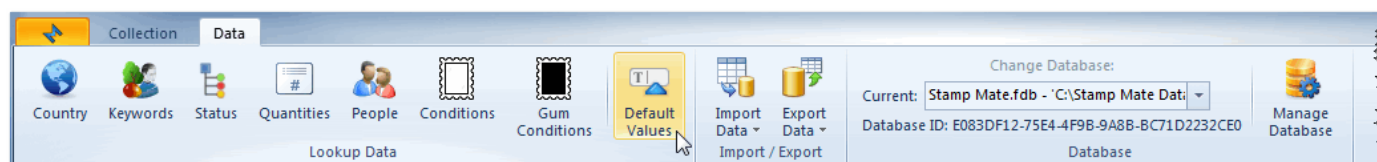
Add, Edit or Delete gum conditions. The gum conditions are used in quantities.



Default Values

With this feature you can store the default values to the fields. That values will be inserted when you add the new record.

To get there click the 'Auction' in Toolbar (Data Tab).



On the top you can find options 'Use in Automatic Import' where you can enable/disable the default values in automatic import.

In two tabs 'General' and 'Personal' you can find all the stamp properties. All the fields with values will be included.

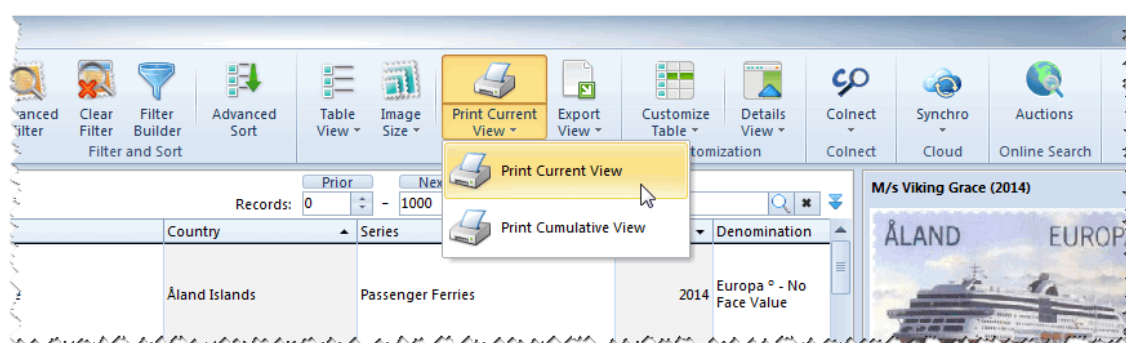
Print Preview

Stamp Mate has two print previews.

The simplest ones are Print Current View and Print Cumulative View.

To get there:

- click the 'Print Current View' button in the Toolbar.

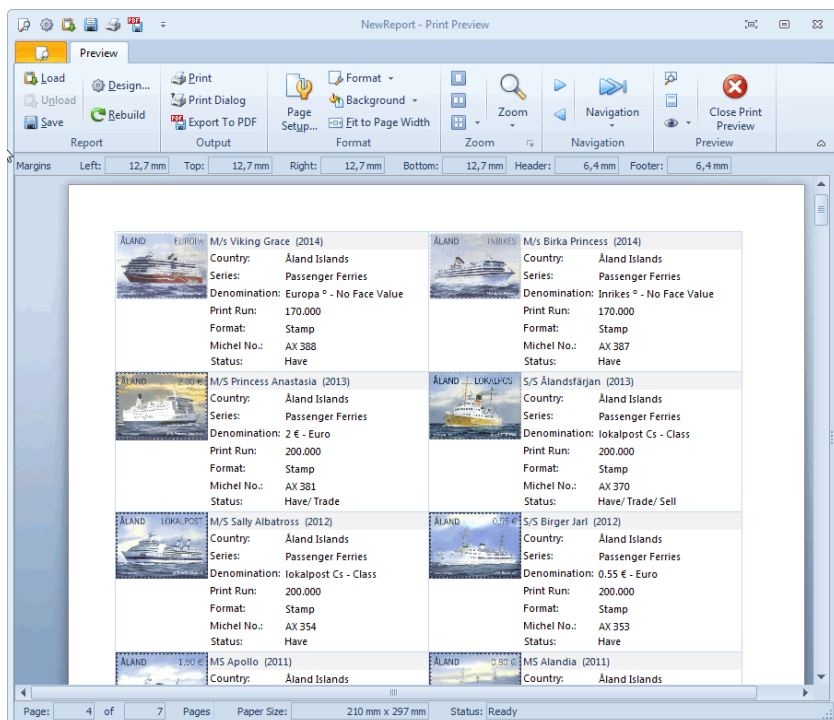


The layout will be exactly the same as the view, so if you customize the view, it will be reflected in the print preview.

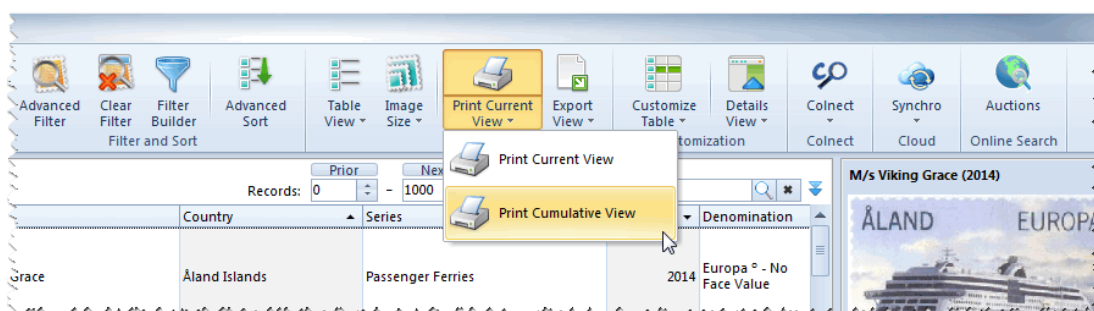
NOTE: The Status icons will be replaced by text.

The Print Current Layout window contains a lot of customization options for the printout such as font, header, footer, page numbering, etc.

You can even export to PDF by clicking the 'Export to PDF' button in the ribbon.



- click the 'Print Cumulative View' button in the Toolbar.



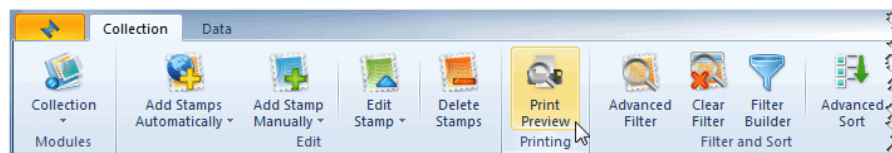
The layout will be exactly the same as the 'Cumulative Overview - Sums' view on the bottom of main window.

	Have Qty	Wish Qty	Trade Qty	Sell Qty	Sell Value	Price	Est Value	Catalog Value	Catalog Value 2	Purchase Value	Sale Value
Åland Islands	12	32	43	11	14,63 \$	0,00 \$	0,00 \$	0,00 \$	0,00 \$	4,50 \$	14,00 \$
Brazil	43	60	23	25	17,50 \$	0,00 \$	0,00 \$	0,00 \$	0,00 \$	0,00 \$	0,00 \$
Canada	10	0	9	5	5,00 \$	0,00 \$	0,00 \$	0,00 \$	0,00 \$	0,00 \$	0,00 \$
China, People's Republic	10	0	0	10	17,00 \$	0,00 \$	0,00 \$	0,00 \$	0,00 \$	0,00 \$	0,00 \$
Egypt	10	25	10	0	0,00 \$	0,00 \$	0,00 \$	0,00 \$	0,00 \$	0,00 \$	0,00 \$
Romania	0	170	100	100	190,00 \$	0,00 \$	0,00 \$	0,00 \$	0,00 \$	0,00 \$	0,00 \$
Samoa	40	0	0	40	40,00 \$	0,00 \$	0,00 \$	0,00 \$	0,00 \$	0,00 \$	0,00 \$
Slovenia	140	0	100	40	80,00 \$	0,00 \$	0,00 \$	0,00 \$	0,00 \$	0,00 \$	0,00 \$
TOTAL	265	287	285	231	364,13 \$	0,00 \$	0,00 \$	0,00 \$	0,00 \$	4,50 \$	14,00 \$

The other option enables you to print more advanced reports.

To get there:

- click the 'Print Preview' button in the Toolbar.



All the filters in the Main Window will be included in Print Preview. For example: If you select 'Algeria' in your collection list, only Algerian stamps will appear in the Print Preview list. Reports always reflect what you have filtered in your collection list.

CHOOSE THE REPORT dropdown menu (below the Toolbar)

You can choose among different reports: Card view, List view, Picture view

The Toolbar is divided in 4 sections:

1. OUTPUT

Print your stamp list directly or with a print dialog. Export your stamp in many ways (pdf, xml, odt, jpg...) but note that not every export is optimized for every report!

2. ZOOM

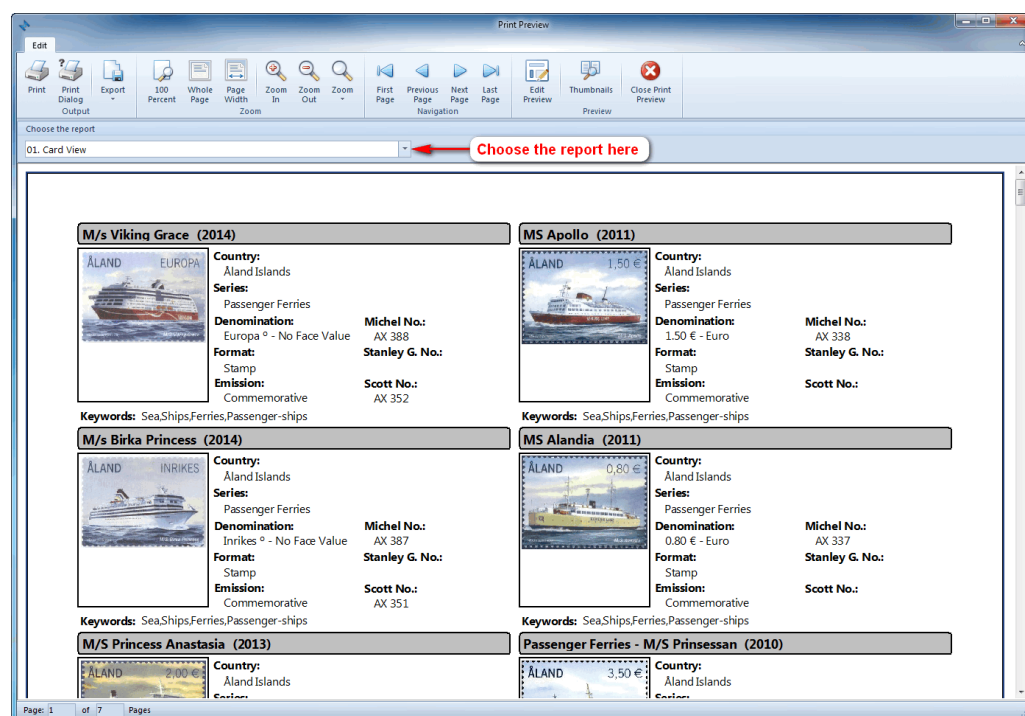
Set your print preview with different zoom options.

3. NAVIGATION

Browse the print preview with navigation buttons or simply scroll through it.

The Edit Preview button allows you to edit existing reports or to create new ones.

The Thumbnails button reveals thumbnail column on the left.

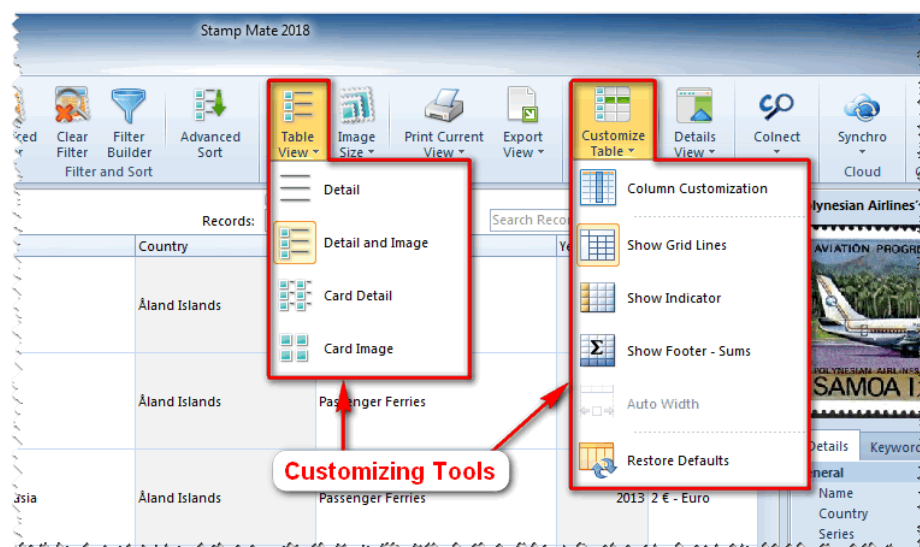


IMPORTANT NOTE: The difference between 'Print Current Layout' and 'Print Preview' options.

If you have 5000 Algerian stamps in your list, only 1000 of them will be printed in the Print Current Layout option, as the view is always set to 1000 records per page. But in the Print Preview option all 5000 stamps will be printed.

Customization

Stamp Mate allows you to customize the views depending on your preference. You can also change/move columns.



Change View

You can set the view to:

- Detail
- Detail & Image
- Card Detail
- Card Image

You can set the image size to small, medium or large in all the views with images (except in 'Detail').

Customize Table

To move a column into a different place, drag the column header into the desired place

To add a new column to a view or to remove a column from a view

- click the 'Customize Table' button in the Toolbar and select Column Customization or
- right click the view and select Column customization.

A small window will appear in the bottom right corner containing the headers of all columns not currently shown in the view.

You can drag columns from this window and into the column header to add columns to the view. You can also drag columns from the header into the customization window to remove them from the view.

You can also toggle Column lines, Indicator or Autowidth on and off

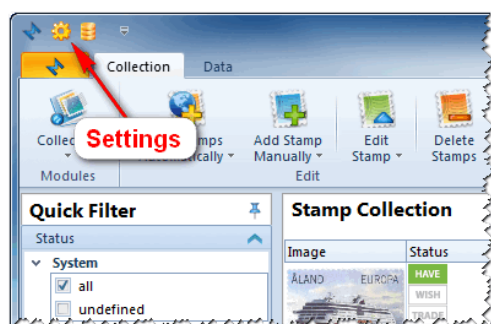
- click the 'Customize Table' button in the Toolbar and select Show Column Lines/ Show Indicator/ Autowidth or
- right-click the view and choose Show Column Lines/ Show Indicator/ Autowidth.

NOTE: Autowidth option is available in 'Card Detail' and 'Card Image' views.

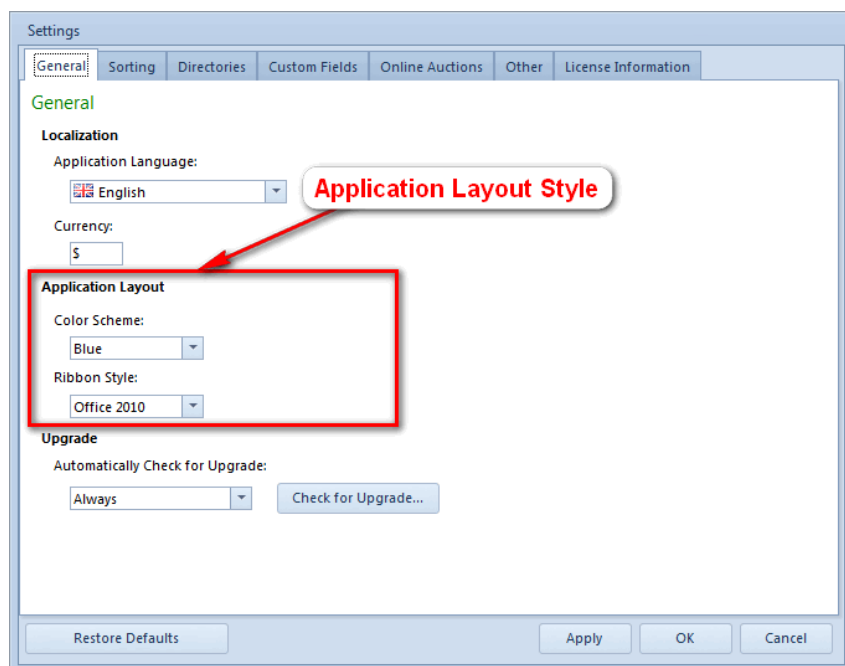
Application Layout

You can change the Application layout in Settings.

The Settings icon is in the very top left corner of the program:



In the General tab you can choose among three different Color schemes and two Ribbon styles.

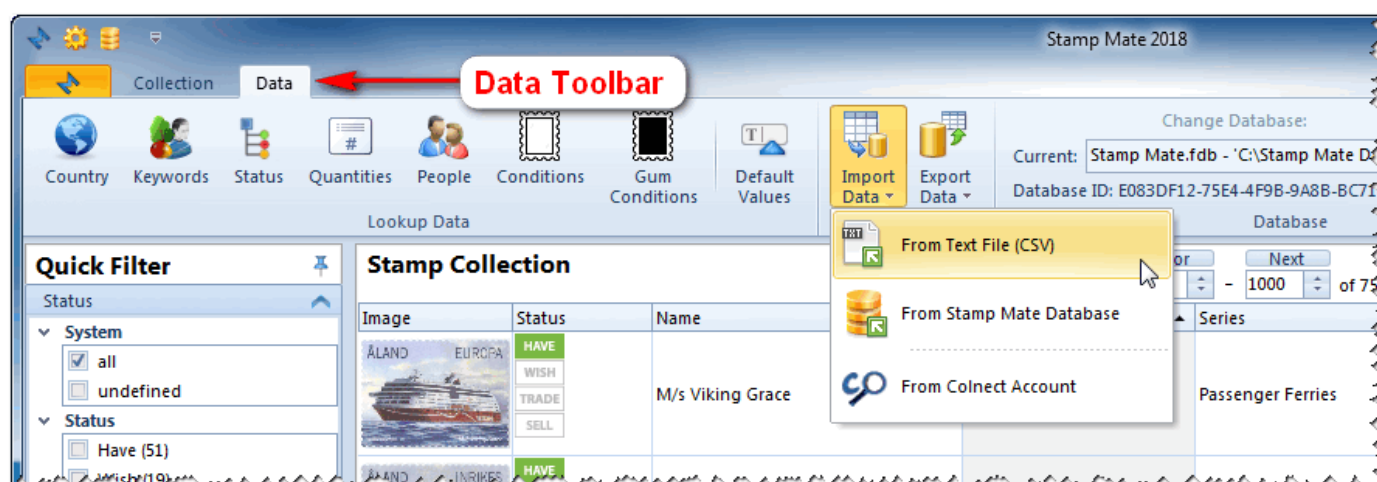


Import from text file (CSV)

If you already have some collection list you can import it into Stamp Mate.

To get there:

Click the 'Import Data' button in the 'Data' Toolbar and select 'From Text File (CSV)' in the dropdown menu.



In the windows that appear you have to provide Import File, Delimiters and Text Qualifier which you have in import file.

If the import file contains field names select 'First Row Contains Field Names' parameter. With 'First Data Row' you specify with which line the data starts.

You can also specify the Decimal separator, Thousand separator and Date format.

By importing images you must provide the absolute path to the image. The absolute path contains the root directory, all other subdirectories and a file name. For example: C:\Images\Stamps\0001.jpg.

After setting the parameters to your needs click 'Next' button.

Import from Text File

Import Parameters

Import File:
C:\Stamp Mate Database\import.csv

Delimiters
☒ Semicolon (;)
☐ Comma (,)
☐ Tab

Text Qualifier
☒ Double Quote (")
☐ Single Quote (')
☐ None

☒ **First Row Contains Field Names**

First Data Row:
1

Decimal Separator: .

Thousand Separator: .

Date Format:
D.M.YYYY (31.1.2018)

IMPORTANT NOTE: By importing images you must provide the absolute path to the image. The absolute path contains the root directory, all other subdirectories and a file name. For example: C:\Images\Stamps\0001.jpg.

< Back Next > Cancel

In the 'Field Mapping' windows you define which column from your file will be imported in which field in Stamp Mate.

In the left column (Target Fields) is the list of the fields found in Stamp Mate. In the right column (Source Field) you have to select the columns from your file. If your file contains field names some source field may be automatically selected.

After selecting the fields click 'Next' button and the importing procedure will start. The process can take several minutes (it depends on the size of import data).

After that the 'Import result' will appear with number of records imported.

Import from Text File

Field Mapping

You can define the field mappings. Set Source fields to specify the correspondence between fields in the Source and fields in the Destination.

Target Field	Source Field
Image	Image (Column 21)
Name	Name (Column 2)
Country	Country (Column 3)
Series	Series (Column 4)
Year of Issue	Issued Year (Column 5)
Denomination	Denomination (Column 6)
Print Run	Print Run (Column 7)
Color	Color (Column 8)
Emission	Emission (Column 10)
Format	Format (Column 9)
Michel No.	Michel No. (Column 11)
Stanley G. No.	Stanley G. No. (Column 12)
Scott No.	Scott No. (Column 13)
Catalog No.	Catalog No. (Column 14)

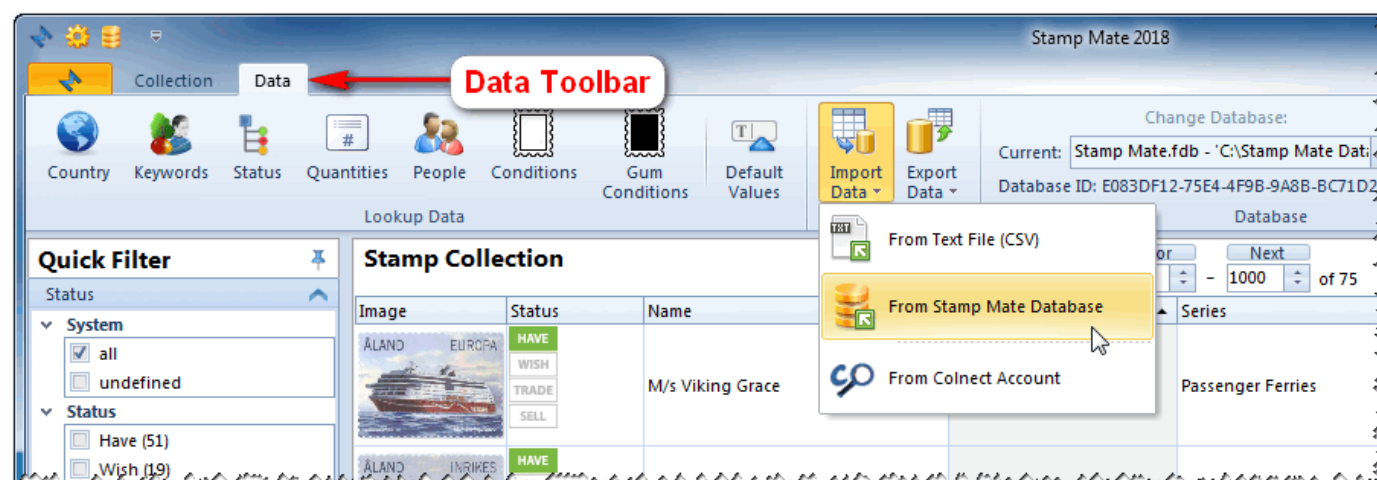
< Back Next > Cancel

Import from Stamp Mate Database

If you want to merge two databases or import a friend's database you can do it with that feature.

To get there:

Click the 'Import Data' button in the 'Data' Toolbar and select 'From Stamp Mate Database' in the dropdown menu.



In the windows that appear you have to provide the database which you want to import.

You can choose between importing all the records in database or importing only new records (the records which are not in current database).

If you choose importing only new records you have to choose the key field and the system will check if the records already exist based on the key field you selected.

Under Additional Information you can include or exclude the personal information which you want to import.

After setting the parameters to your needs click 'Next' button and the importing procedure will start. The process can take several minutes (it depends on the size of import data).

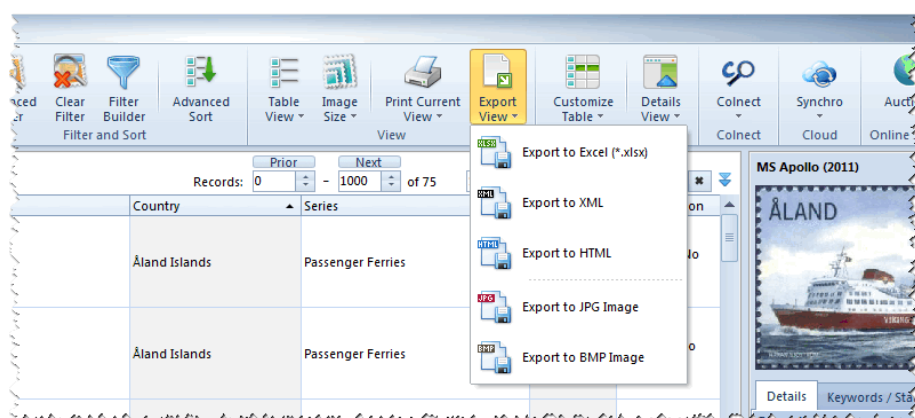
After that the 'Import result' will appear with number of records imported.

Export Data

Stamp Mate has three ways of exporting data.

Export current view

Here you can export to Excel (*.xlsx), XML, HTML and JPG or BMP image.

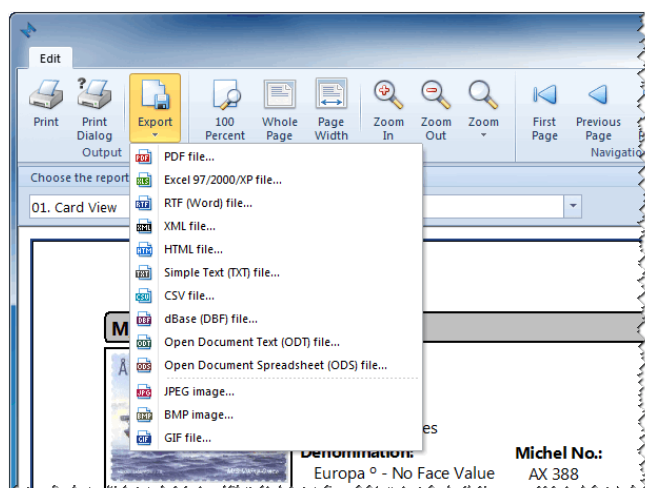


The layout will be exactly the same as the view, so if you customize the view it will be reflected in the export.

NOTE: The Status icons (Have, Wish, Trade, Sell) will be replaced by text.

Export Print Preview

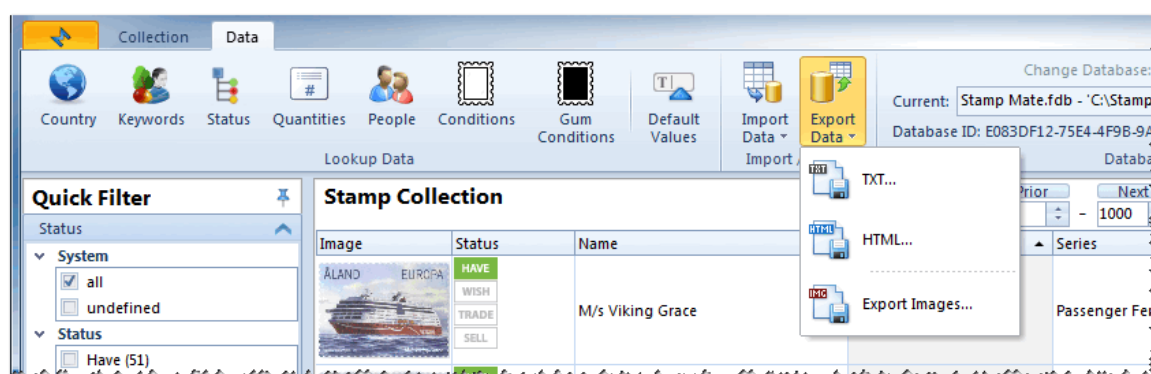
In the Print Preview window, you can find the Export button in the Toolbar. It contains several export types. The current chosen report will be exported.



NOTE: Not every export is optimized for every report!

Customize Export

The Export Data button can be found in the Data Tab toolbar:



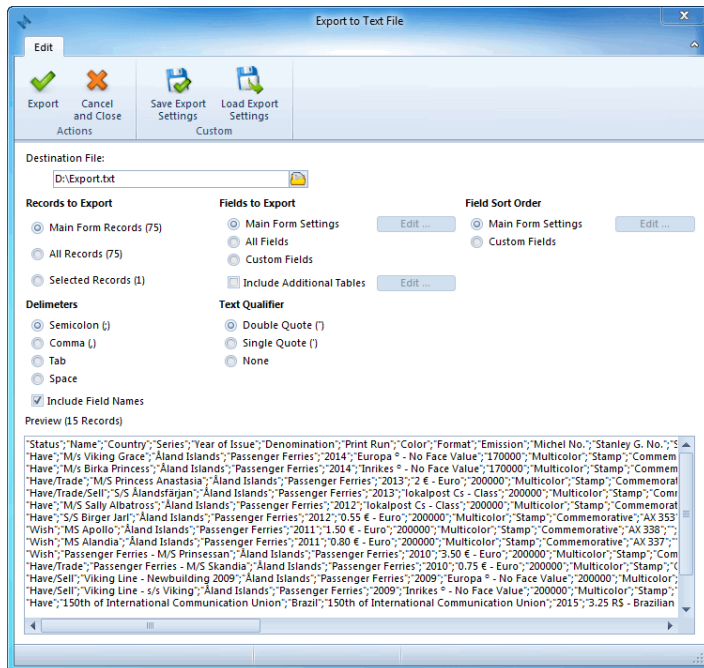
These are the exports that can be customized.

Export to TXT file

In the Export to Text window you can select the items and fields to export and set the sort order (or use the Main Form Settings).

You can customize Delimiters and Text Qualifier as well. In the bottom of the window you can see an export preview.

Name your Destination File and click the Export button in the Toolbar.



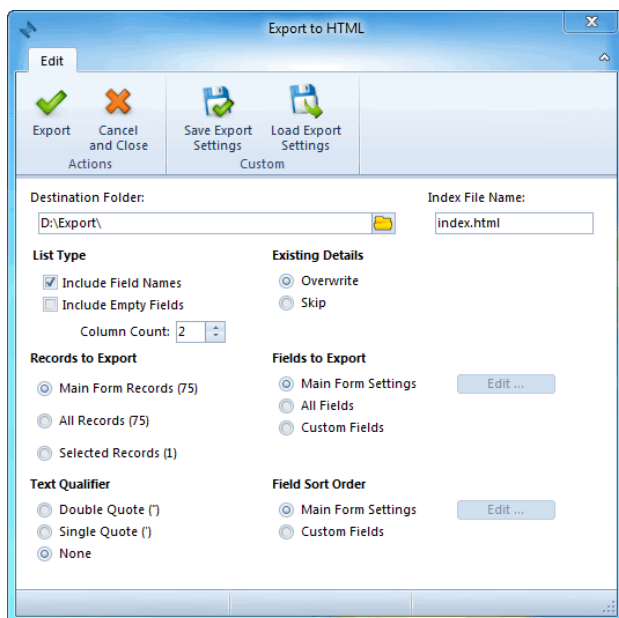
NOTE: You can also save export settings.

Export to HTML file

In the Export to HTML window you can select the items and fields to export and set the sort order (or use the Main Form Settings).

You can customize Delimiters and Text Qualifier.

Name your Destination Folder and Index file name, then click the Export button in the Toolbar.



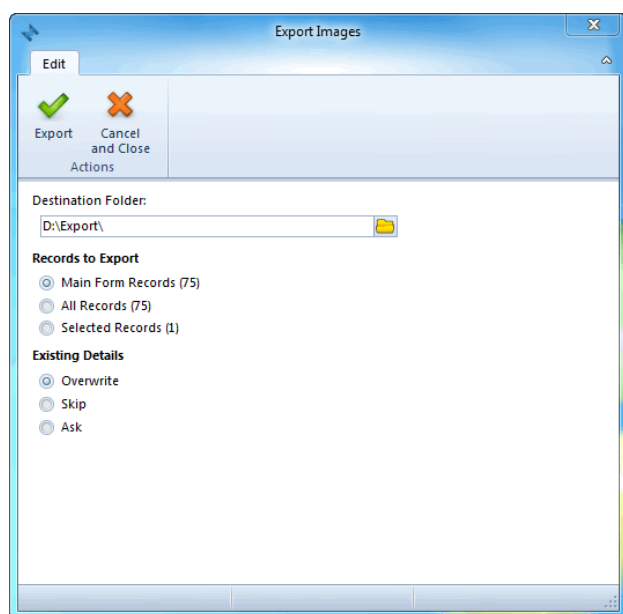
NOTE: You can also save export settings.

Export Images

NOTE: Only images will be exported here.

In the Export Images window you can select the Items to Export and what to do with Existing Details.

Name your Destination folder then click the Export button in the Toolbar.



Statistics

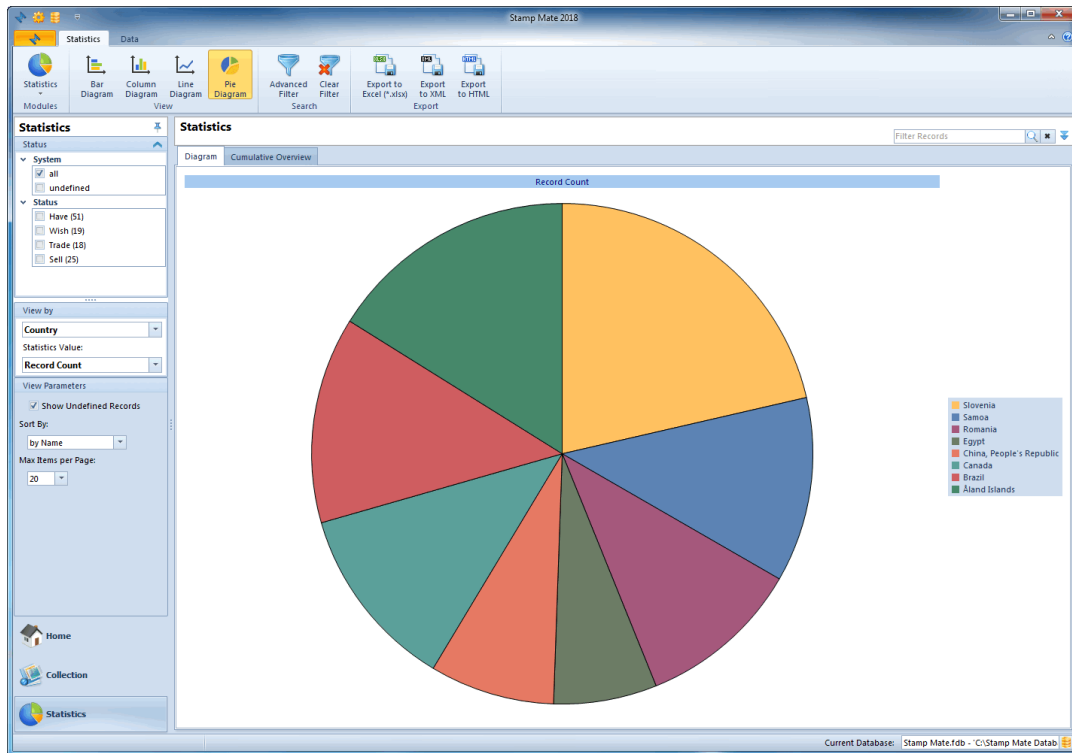
Sooner or later, you will want to check some statistics in your collection. To get to the Statistics window, click the shortcut in the Navigation bar or choose it from the dropdown menu in the Toolbar (upper left corner).

You are able to choose from a variety of statistics and view them as a:

- bar
- column
- line
- pie diagram.

Diagram buttons are in the Toolbar next to Advanced Filter icon. More about the Advanced Filter is described in [Filter, Search and Sort](#).

You can change statistic parameters in the Navigation bar.



You can also use table view of statistic values.

To get there:

- click the 'Cumulative Overview' tab button just above the chart

Statistics

Data

Statistics

Bar Diagram

Column Diagram

Line Diagram

Pie Diagram

Advanced Filter

Clear Filter

Export to Excel (*.xls)

Export to XML

Export to HTML

Statistics

Modules

View

Statistics

System

Status

Have (102)

Wish (38)

Trade (36)

Sell (51)

View by

Country

Statistics Value:

Record Count

View Parameters

Show Undefined Records

Sort By:

by Name

Max Rows per Page:

20

Diagram

Cumulative Overview

Filter Records

Country	Count	Status Qty.				Quantities				Quantities				Quantities			
		Have Qty.	Wish Qty.	Trade Qty.	Sell Qty.	Have Qty.	Wish Qty.	Trade Qty.	Sell Qty.	Sell Value	Price	Est. Value	Catalog Value	Catalog 2 Value			
Åland Islands	38	32	6	16	18	32	64	86	22	2,66 \$	0,00 \$	0,00 \$	0,00 \$	0,00			
Brazil	15	10	0	0	0	43	60	23	25	0,70 \$	0,00 \$	0,00 \$	0,00 \$	0,00			
Canada	18	8	10	0	0	20	0	18	10	2,00 \$	0,00 \$	0,00 \$	0,00 \$	0,00			
Ceylon	3	0	0	0	0	0	0	0	0	0,00 \$	0,00 \$	0,00 \$	0,00 \$	0,00			
China, People's Republic	32	32	0	16	32	40	0	0	40	6,80 \$	0,00 \$	0,00 \$	0,00 \$	0,00			
Egypt	10	0	10	0	0	20	50	20	0	0,00 \$	0,00 \$	0,00 \$	0,00 \$	0,00			
France	4	0	0	0	0	0	0	0	0	0,00 \$	0,00 \$	0,00 \$	0,00 \$	0,00			
Nova Scotia	1	0	0	0	0	0	0	0	0	0,00 \$	0,00 \$	0,00 \$	0,00 \$	0,00			
Romania	16	10	6	0	0	2	340	200	200	3,80 \$	0,00 \$	0,00 \$	0,00 \$	0,00			
Samoa	28	24	4	16	8	80	0	80	2,00 \$	0,00 \$	0,00 \$	0,00 \$	0,00 \$	0,00			
Slovenia	102	100	2	80	100	1.120	0	800	320	16,00 \$	0,00 \$	0,00 \$	0,00 \$	0,00			
	267	216	38	128	158	1.357	514	1.147	697	33,96 \$	0,00 \$	0,00 \$	0,00 \$	0,00			

Home

Collection

Statistics

Current Database: Stamp Mate.fdb - C:\Stamp Mate Datab

Synchronize data with Cloud

Synchronizing data with Dropbox cloud allows you to transfer data between multiple devices by using an online cloud, so no cable connection is needed.

The Dropbox cloud is one of the most used clouds; it is free and includes a least 2GB of space.

In order to use synchronization, you require a Dropbox account. You can create it on www.dropbox.com.

IMPORTANT NOTES:

- **Synchronization is not automatic, so you have to run it manually every time you want to synchronize your data.**
- **Before starting synchronization, we strongly suggest you to make a backup of all your databases.**
- **If you are using multiple databases, you have to set synchronization for each database separately.**

Before starting, we suggest you to delete all the data on your secondary devices, otherwise the sample data will be transferred into your main database.

Do not delete data in your main database!

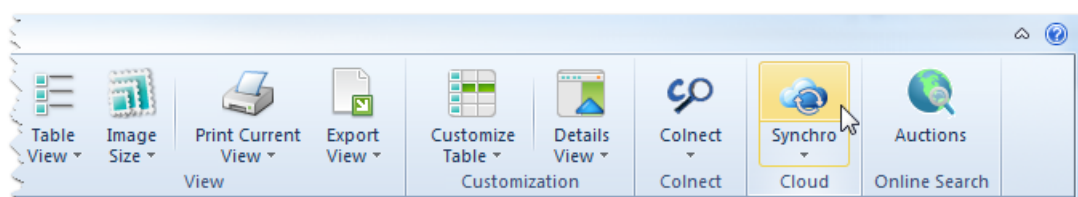
This manual is divided into two parts. Please read the manual very carefully.

The first part describes how to set a "connection" between the devices you want to use and the second part how to use synchronization.

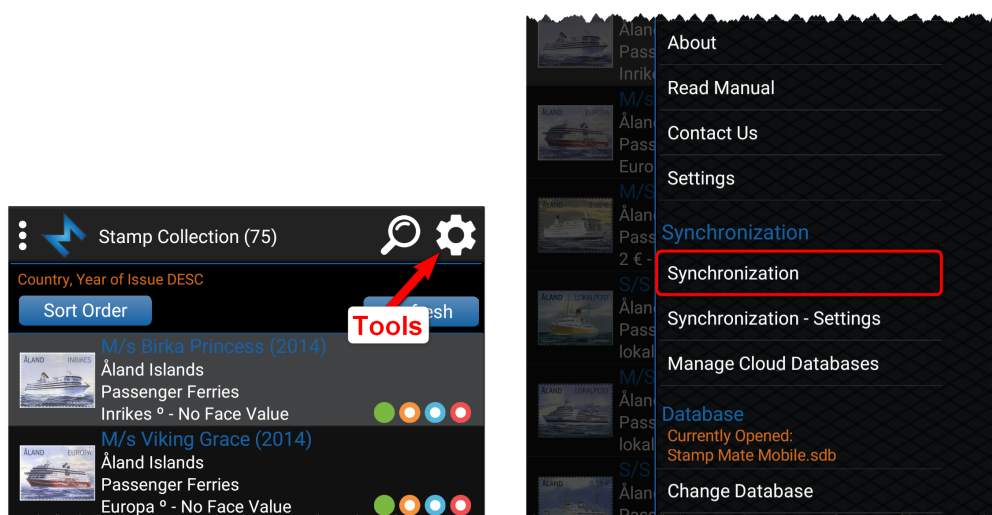
Setting the "connection" between devices:

How to get there:

- In the Desktop version, click the 'Synchro' button in the Toolbar



- In the Mobile version, click the 'Tools' button in the upper-right corner and then select 'Synchronization'

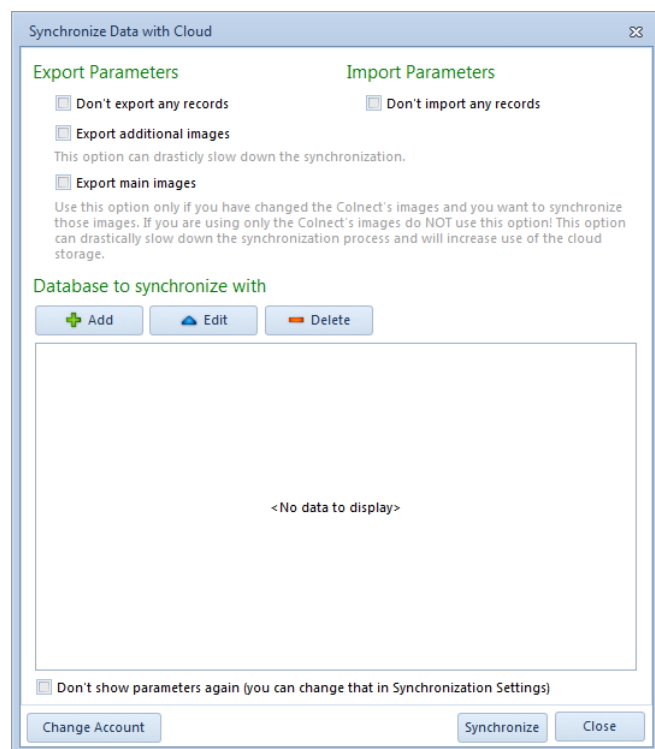


First you have to connect to Dropbox (only once).

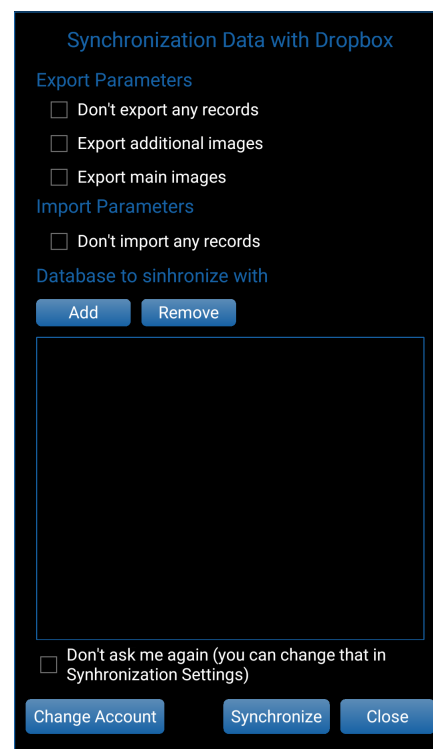
If you are using a Google email or account for Dropbox, please click the "Sign in with Google" button; otherwise just enter your email address and password.

After connecting to Dropbox, the parameter window will appear.

Desktop version:



Mobile version:



Here you have Export and Import Parameters and a list of Databases to synchronize with.

Export Parameters:

- Don't export any records - If you want only one-way synchronization and you want to use a currently opened database only as a client (just to receive information), use this option.
- Export additional images - If you have additional images and if you want to synchronize with other devices, this option can drastically slow down synchronization, especially if you are using large high-quality images.
- Export main images - Use this option only if you have changed the Colnect's images and you want to synchronize those images. If you are using only the Colnect's images do NOT use this option! This option can drastically slow down the synchronization process and will increase use of cloud storage.

Import Parameters:

- Don't import any records - If you want only one-way synchronization and you don't want to import data from another databases/devices, use this option.

Use Export and Import Parameters only for special/custom synchronization and if you fully understand what it is there for. If you are not sure, simply leave all the parameters unchecked.

Databases to synchronize with:

Here is a list of Databases you want to synchronize with. When running synchronization for the first time, the list is empty and no actions are required on your part.

If you have already performed synchronization on any other device and if you want to synchronize data, you have to add that database. Click the Add button and select the database from the list.

If you are synchronizing data between two devices, you require a single database in that list, and if you are synchronizing data between three devices, you require two database in that list, etc.

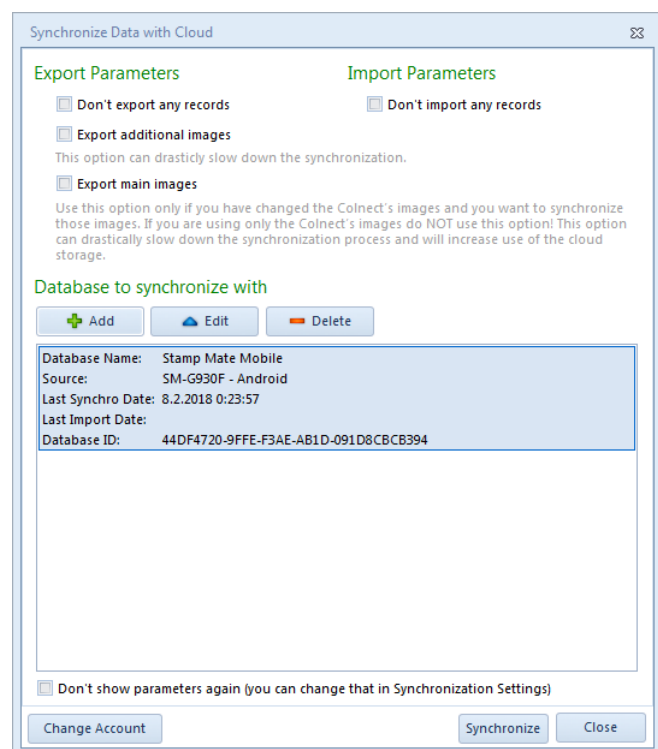
When you have set all the parameters and the database list, you can click the "Synchronize" button and synchronization will begin.

If you are performing synchronization for the first time and you have a very large database, the procedure can take several minutes to complete. Duration of future synchronizations depends on the changes you make.

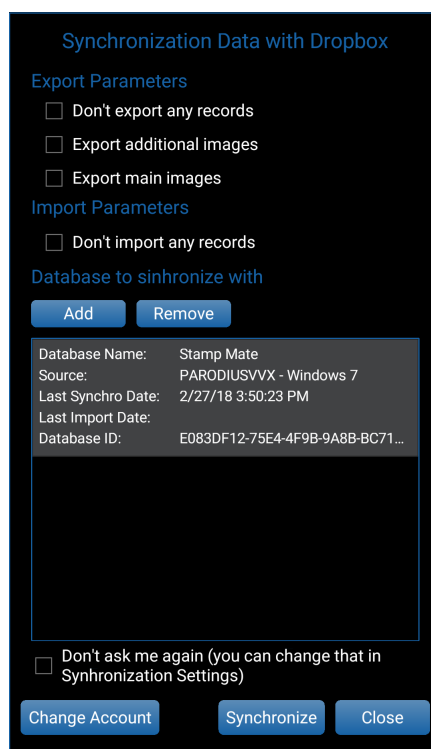
Once synchronization is completed, you have to open Stamp Mate or Stamp Mate Mobile on the other (second) device and run synchronization on that device. On the second device, you have to add the database from the first device into the list of Databases to synchronize with. After finishing synchronization on the second device, you have to go back to synchronization on the first device and add the database from the second device into the list of Databases to synchronize with. If you want to synchronize three databases, you have to do that on all three devices.

These synchronization settings need to be set only once and in the end it should look like this:

Desktop version:



Mobile version:



Using synchronization:

Once you have successfully set the "connection" between the devices, you can start synchronizing the data between devices.

IMPORTANT NOTES:

- If you delete the data on one device, those data will also be deleted on all other devices.
- If you add the same stamp into two "connected" databases and run synchronization afterwards, the stamp will be duplicated.
- If something goes wrong during synchronization (loss of internet connection, closing application, etc.) just run it again and the process will resume.

How to use:

When you have made some changes (adding, editing or deleting data) and you want to transfer these changes to another device, you have to run synchronization on both devices. First you have to run synchronization on the device, on which the changes were made, in order to transfer the data to the cloud. When synchronization is completed, you have to run synchronization on the second device, in order to transfer data from the cloud.

For easier and faster use of synchronization, you can set the synchronization procedure to "one click synchronization". To do that, simply check the 'Don't show me again' option in Welcome and Parameter windows. In order to set those parameters back to default or to change synchronization parameters, you can use the 'Synchronization - Settings' option.

Adding a new device:

If you want to add a new device, you have to empty the database on that device first. Secondly, run synchronization on the new device, set the parameters and add all the databases from other devices as described in the first part of this manual. Then you have to run synchronization on all other devices and add the new device into database list as described in first part of that manual. If you have set "one click synchronization", use the 'Synchronization - Settings' option.

Troubleshooting:

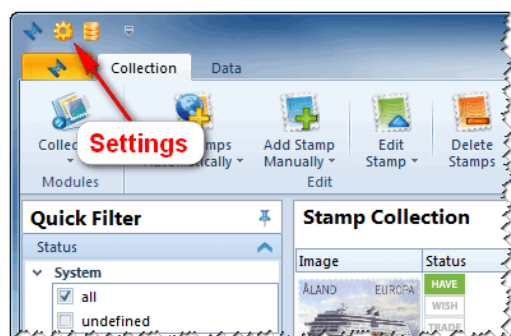
If for any reason you want to delete the cloud databases, you can do that by choosing "Manage Cloud Databases". Here you can find all the databases in your Dropbox cloud.

Settings

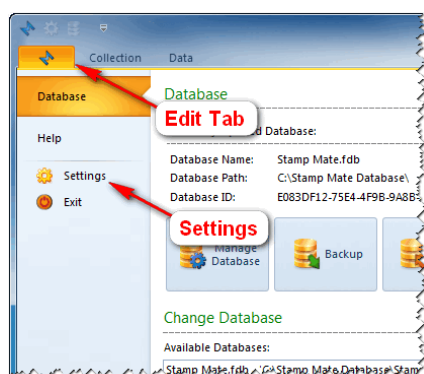
We recommend everyone to take a look at the program's Settings before starting to use it seriously, because there are several options that affect how the program acts and how various functions work.

How to get there:

- To open the Settings window, choose the Settings icon in the top left corner of the program or



- go to the Edit tab and click Settings.



The Settings window consists of five tabs.

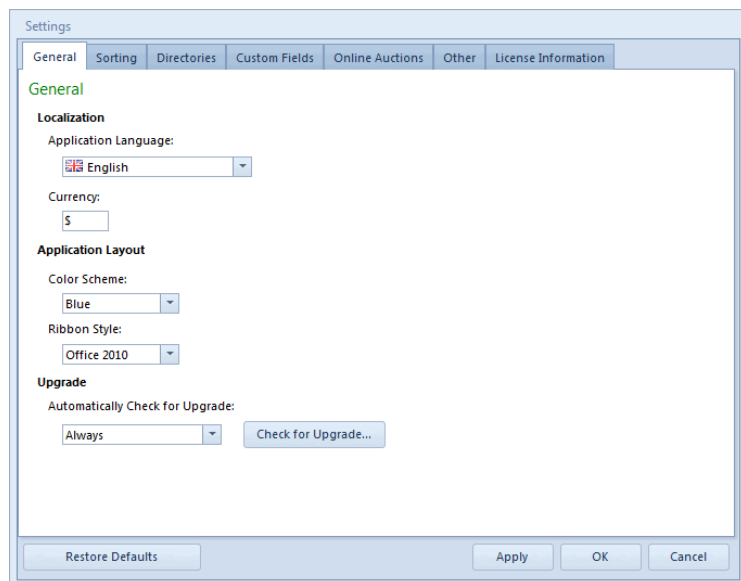
General

Here you can change the language of a program. At the moment you can choose between 12 languages.

You can also set the currency.

The Color Scheme is by default set to Blue, but you can set it to Silver or Black. You can also change the Ribbon style from Office 2010 to Office 2007.

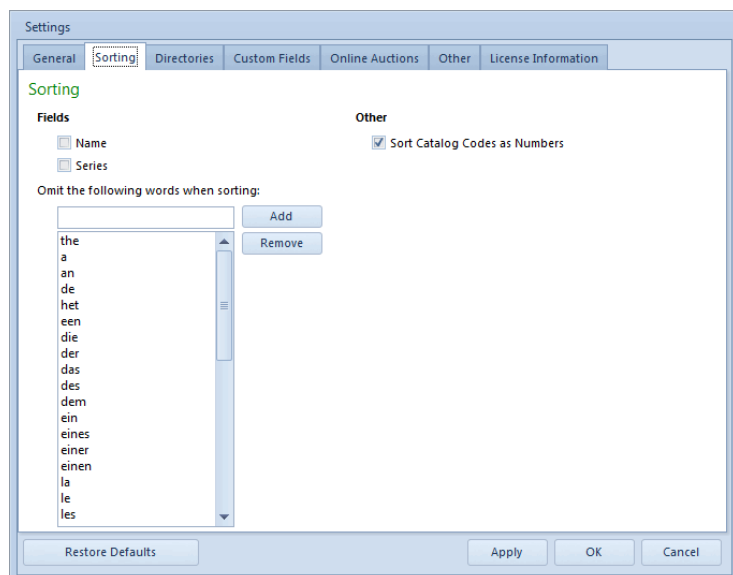
The Update option allows you to automatically check for updates always, weekly, monthly or never. We recommend you have this option enabled. It checks for new versions of Stamp Mate, when the program is started.



Sorting

When the program is sorting the records, it can omit the words in the list. You can select to omit them in Name or Series or both. Also you can add or remove words from the list to omit when sorting. Do this by using the Add and Remove button.

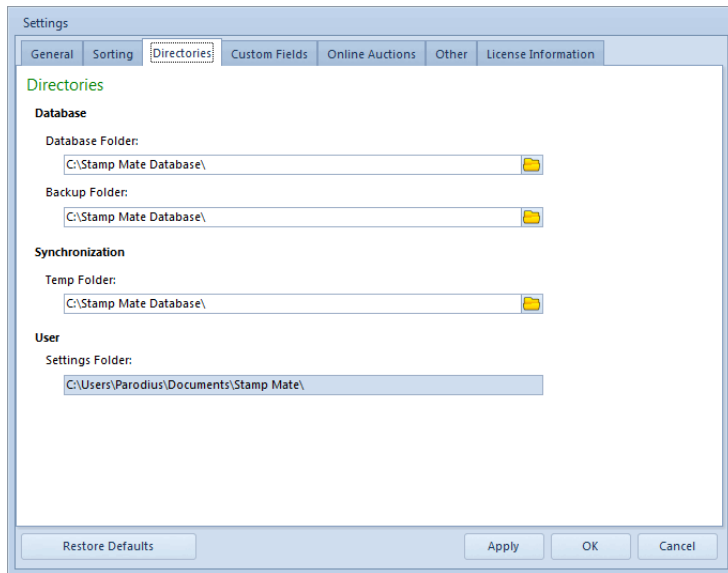
The other option is to Sort Catalog Codes as Numbers.



Directories

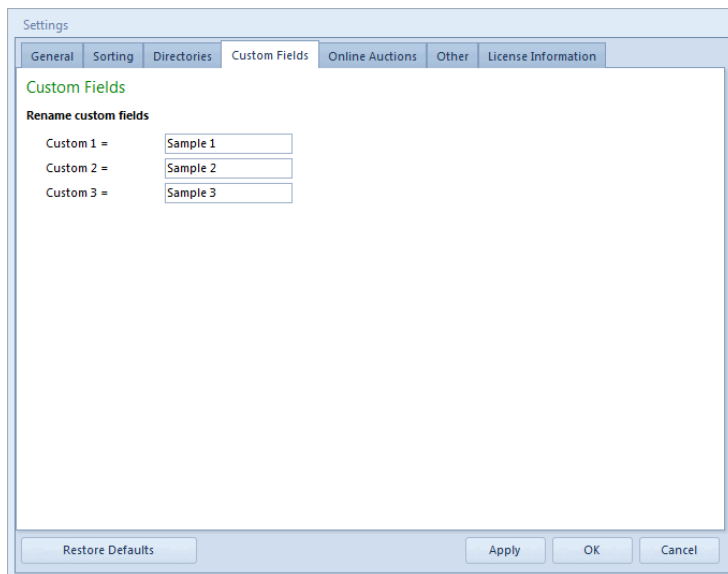
Here you can change your default Database and Backup folder.

NOTE: Changing them will not move any backup or database files. You cannot change the Settings folder.



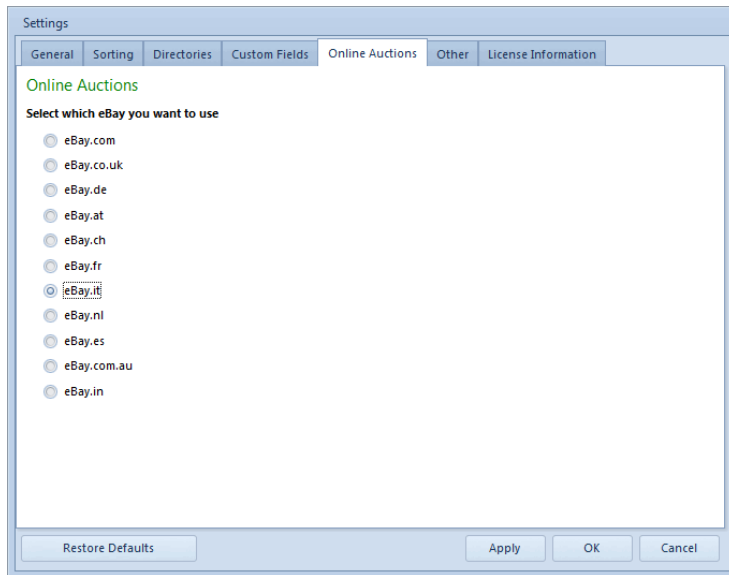
Custom Fields

Here you can change the name of custom fields.



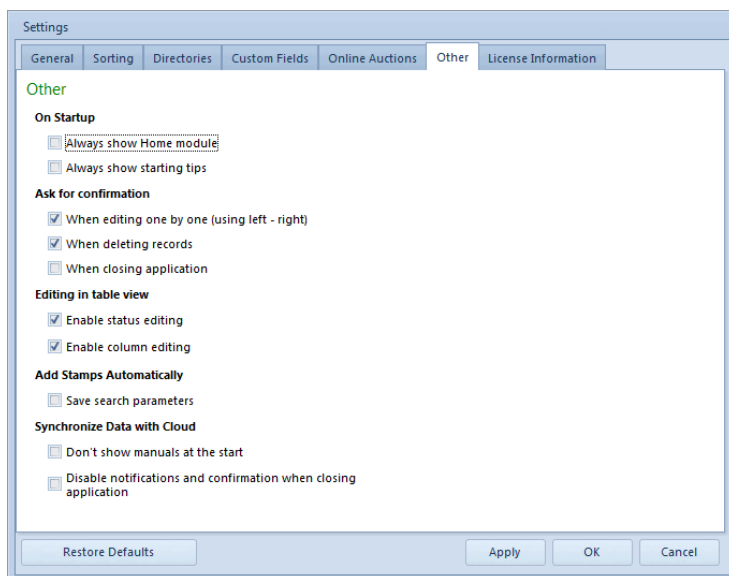
Online Auctions

Here you can choose which eBay you want to use in Auctions. More about that is described in the topic: [Auctions - Online Search](#)



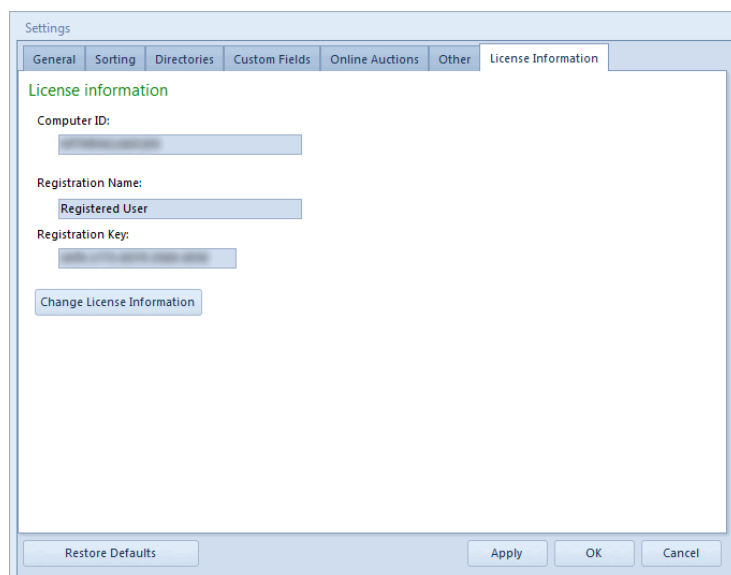
Other

Check the box for the 'Startup', 'Ask for Confirmation' and 'Editing' in table view properties.



License Information

You can see your license information here or change any data if necessary.



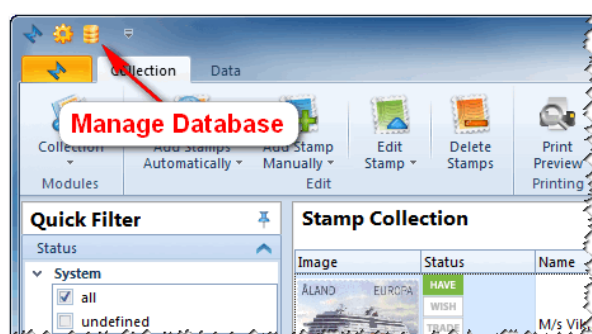
The Restore Defaults button in the bottom left corner of the Settings window allows you to change settings back to default.

Manage Database

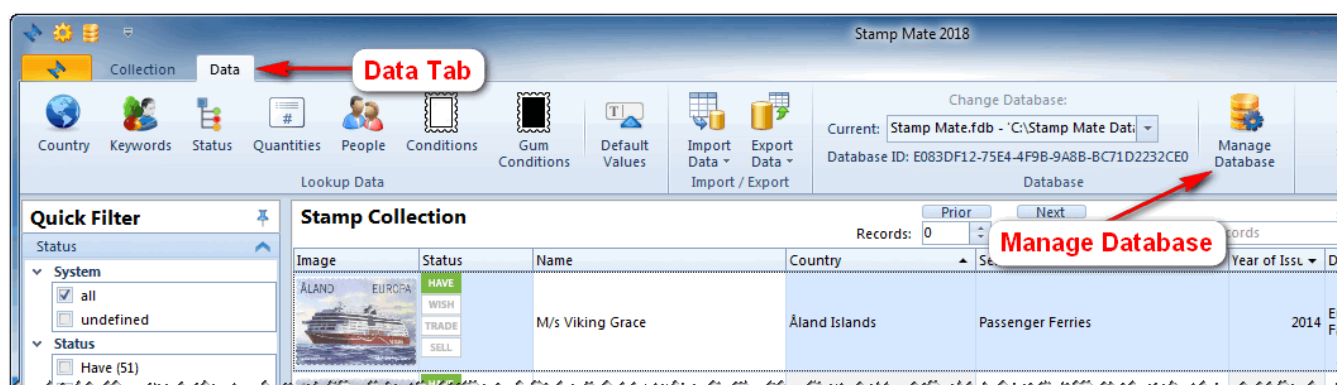
The 'Manage Database' icon is in the very upper left corner of the Stamp Mate window.

To get there:

- click the icon in the top left corner of the program or



- go to the Data tab and click the Manage Database icon in the Toolbar.



The General tab has three options:

- Change Database - contains the list of Databases that have been previously opened. You can remove the current database from the list and replace it with a new one by clicking the Change button.

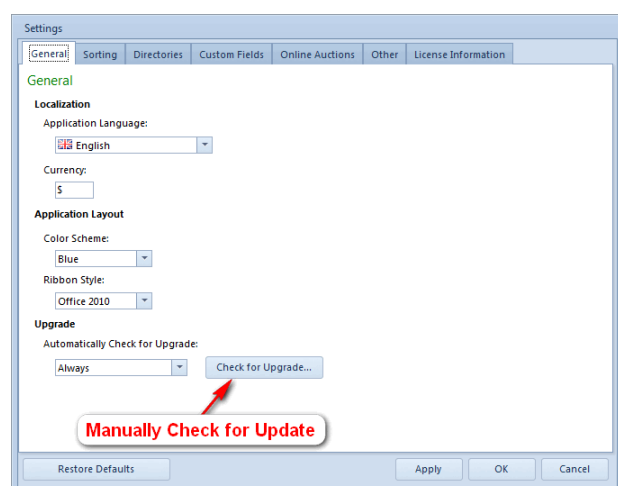
- Open Database - you can browse for an existing Database. Once the database is opened, it will be added to the Change database list.
- Create New Database - First select the folder where you want to create the new database, enter the name and click Create. Once it's created you can immediately open it.

In the Backup /Restore tab you can create a backup of current database. You can create it in any directory you want. The other option is to restore a backup database. **NOTE: It will overwrite the currently opened database.**

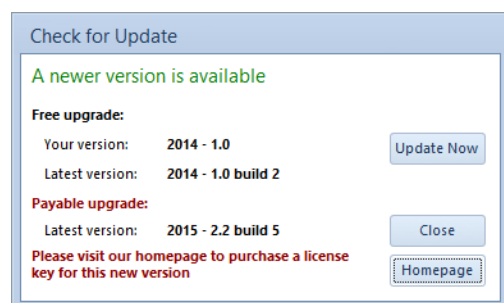
Check Update

When you start Stamp Mate it always checks for updates by default.

You can change it in Settings> General> Update. By clicking the 'Check for Update' button you can also manually check for updates.



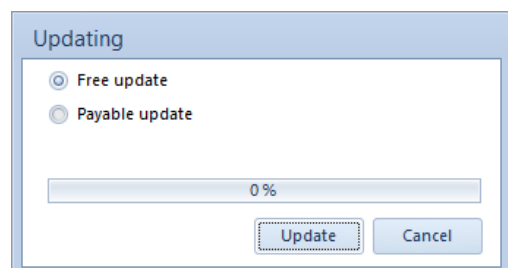
If a newer version is available, the update information appears:



You have two different upgrades available, a free one and a payable one. The free upgrade doesn't require buying a license, while the payable one naturally does.

If you have decided to upgrade the program, click 'Update now' and choose which upgrade (free or payable) you want.

The update file will be automatically downloaded and will immediately start installing automatically.



If the upgrade process doesn't start immediately, first close the program and then go to C:\Users\UserName\Documents\Stamp Mate and run the .exe application manually.